



DOYLE

UPCOMING
FINE ART HIGHLIGHTS



Bob Frederick Kuhn
American 1920-2007
Evening Hunt, 1975
Signed and dated *Kuhn/ 75 (ul)*;
signed, inscribed with copyright
notice, titled and dedicated *Painted
for my friend, Bill Stremmel, 1975/ - BK*
on the reverse
Oil on Masonite
22 x 36 inches (55.8 x 91.5 cm)
Estimate: \$50,000-70,000
Auction May 14

The Collection of Joanne B. Breyer

Provenance:
Bill Stremmel, gift from the artist;
thence by descent in the family
Sale, Coeur D'Alene Auction,
Hayden, ID,
Jul. 26, 1997, lot 200
A Western museum, acquired from
the above
Sale, Christie's, New York, Sep. 28,
2010, lot 71



Bob Frederick Kuhn
American 1920-2007
Tigers at Play
Signed *Kuhn (ll)*
Oil on Masonite
24 x 41 7/8 inches (61 x 106.4 cm)
Estimate: \$60,000-80,000
Auction May 14

The Collection of Joanne B. Breyer

Provenance:
Sale, Sotheby's, New York, Apr. 16, 1998, Lot 167



Helen Frankenthaler

American, 1928-2011

Vista, 1980

Signed *Frankenthaler '80* (lr) and signed *Vista Frankenthaler 1980* on the reverse

Acrylic on canvas

15 1/2 x 42 3/4 inches (39.37 x 108.59 cm)

Estimate: \$500,000-700,000

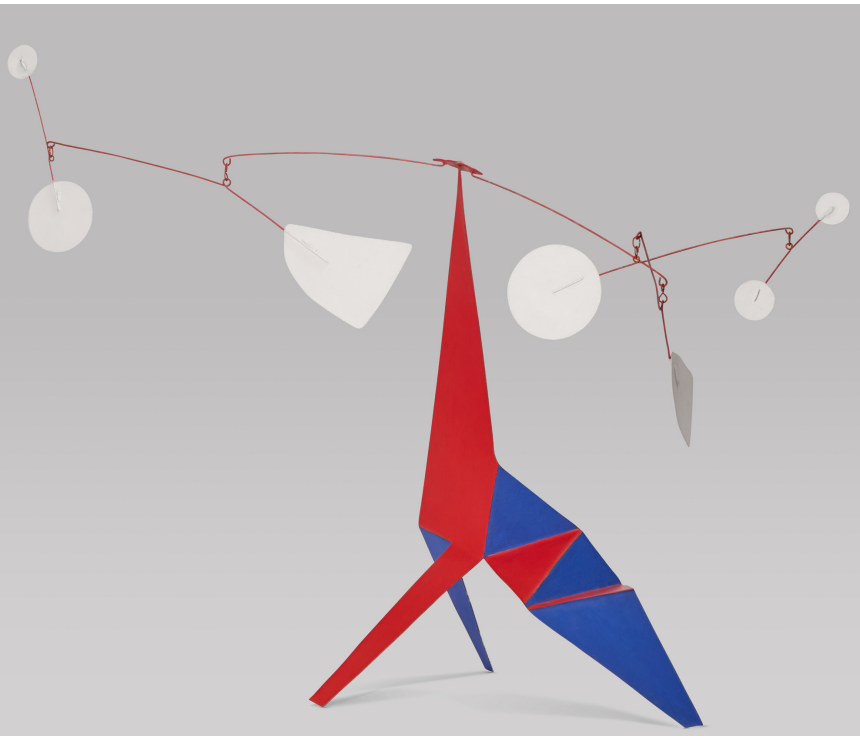
Auction May 14

Provenance:

Andre Emmerich Gallery, New York

Woltjen / Udell Gallery, Edmonton, Canada

Acquired from Andre Emmerich Gallery by the present owners circa 1980s



Alexander Calder

American, 1899-1976

Krinkly Klang, 1969

Signed CA '69 on white paddle

Sheet metal, wire and paint

32 1/2 x 48 1/2 x 13 1/2 inches

Estimate: \$400,000-600,000

Auction May 14

Provenance:

M. Knoedler Gallery, New York

Irving Galleries, Palm Beach, Florida

Acquired from the above by the current owner in 1981

Thence by descent in 2019



Lynn Chadwick
British, 1914-2003
Sitting Woman, 1989
Inscribed, dated and numbered C87.1989 26/30
Bronze
4 3/4 x 4 x 4 1/2 inches (12 x 10.1 x 11.4 cm)
Estimate: \$12,000-18,000
Auction May 14



March Avery
American, b. 1932
Turkish Silvertrees (Gulluk), 1981
Signed and dated March Avery 81
(II), signed and dated March Avery
1981 and inscribed as titled on the
stretcher
Oil on canvas
42 x 52 inches (106.7 x 132 cm)
Estimate: \$15,000-25,000
Auction May 14

Provenance:
Private collection, New York



Louise Nevelson
American, 1899-1988
Cryptic #71, 1969
Inscribed *Nevelson* on the bottom
Ebonized sculptural wood box
9 x 8 3/4 x 6 inches (22.9 x 22.2 x 15.2cm)
Estimate: \$10,000-15,000
Auction May 14

Provenance:
Pace Gallery, New York
Galerie Jeanne Bucher, Paris
Makler Gallery, Philadelphia



Cornelis Theodorus Maria 'Kees' van Dongen

Dutch /

French, 1877-1968

La Femme aux Lapins, circa 1920

Signed *van Dongen* (lr)

Oil on canvas

36 5/8 x 32 inches (93 x 81.3 cm)

Estimate: \$400,000-600,000

Auction May 14

Provenance:

Galerie Bernheim-Jeune, Paris (acquired directly from the artist in December 1921)

Sale, Palais Galliera, Paris, December 8, 1971, lot 46

Sale, Saint Germain, Laye, June 19, 1994, lot 60

R.S. Johnson Fine Art, Chicago

Sale, Sotheby's, New York, May 12, 1999, lot 310



Mary Stevenson Cassatt

American, 1844-1926

Sewing in the Conservancy, 1895 (also known as *Girl Knitting*, *Femme tricotant*, and *Jeune femme brodant*)

Signed *Mary Cassatt* (ll)

Pastel on paper

28 1/2 x 21 1/8 inches (72.39 x 53.66cm)

Estimate: \$300,000-500,000

Auction May 14

Provenance:

The artist

Ambroise Vollard, Paris

Martin Fabiani, Paris

Mlle. Fouque et Mlle. Deschryvère, 1945

International Gallery, Chicago, 1965

Mrs. Samuel E. Johnson, Chicago



Camille Pissarro

Danish / French, 1830-1903

Portrait du peintre Piette devant son chevalet

(*Portrait of the Artist Ludovic Piette before his Easel*), 1861

Oil on canvas

21 x 14 3/4 inches (53.3 x 37.5 cm)

Estimate: \$120,000-180,000

Auction May 14

Provenance:

Given by the artist to Ludovic Piette, Melleray, France

Mlle Fanny Lévy, Paris

Sale, Galerie Motte, Geneva, Switzerland, Jul. 2, 1971, no. 333

Sale, Sotheby Parke Bernet, New York, Nov. 28, 1973, lot 21

Dr. and Mrs. Jordan H. Trafimow, USA

R.S. Johnson Fine Art, Chicago (acquired from the above in 2000)

Acquired from the above Jan. 1, 2001



Childe Hassam

American, 1859-1935

Dunes near the Sea, 1890 (Also known as *Island of Shoals*)

Signed *Childe Hassam* and dated 1890 (lr)

Oil on canvas

15 1/8 x 18 inches (38.4 x 45.7 cm)

Estimate: \$150,000-250,000

Auction May 14

Provenance:

The artist, 1890

Private collection, New York, until 1951

Kende Galleries, New York, April 26, 1951, no. 89 illus., as *Island of Shoals*

Mr. John Fox, Boston, until 1957

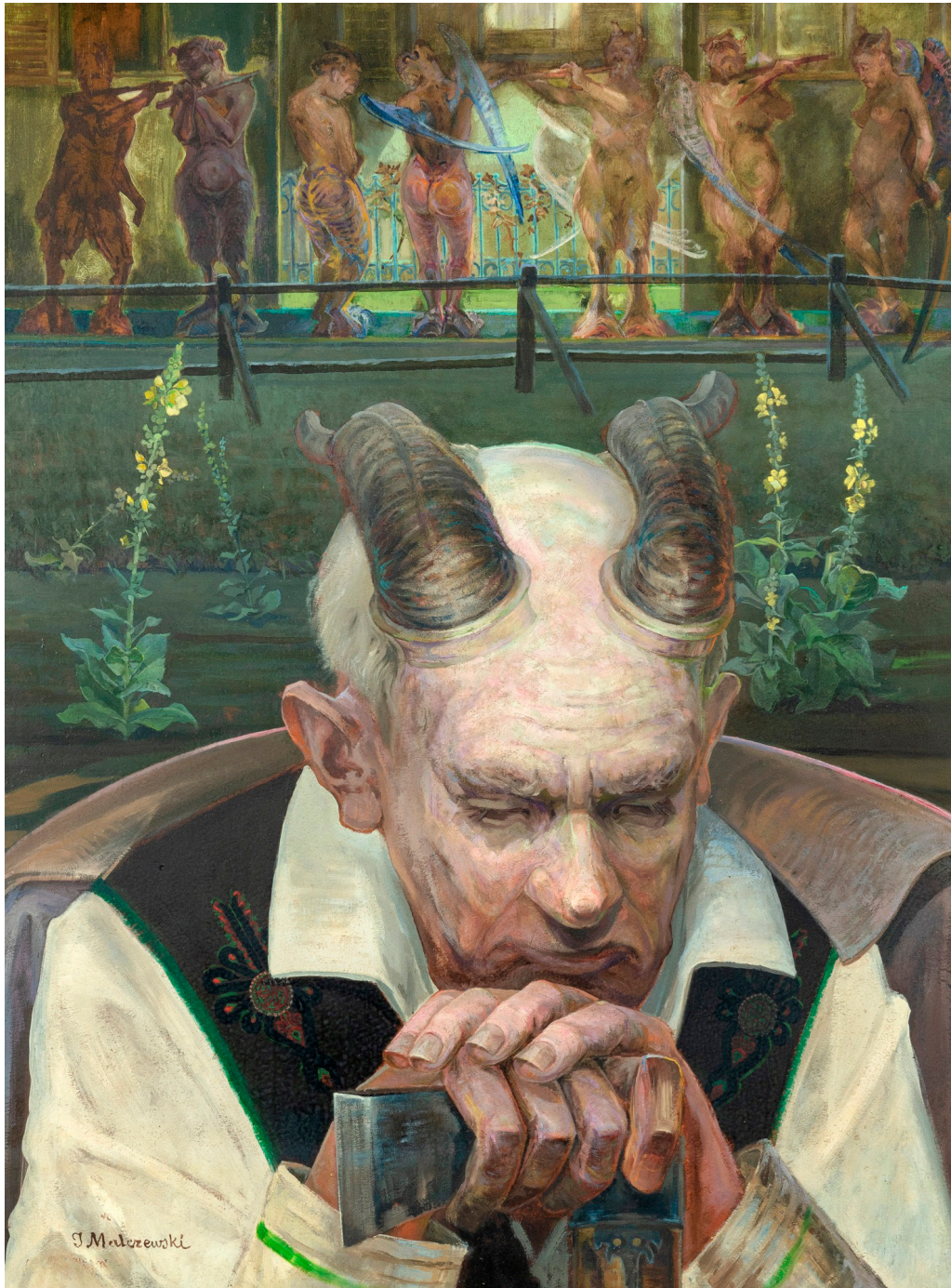
Ms. Rita Doten, aka "Massachusetts Private Owner," as agent for John Fox

Parke-Bernet Galleries, New York, November 13, 1957, no. 21 illus., as *Dunes Near the Sea*

Mr. and Mrs. Henry Breyer, Jr., Haverford, Pennsylvania, 1957-1972

Margaret McKee (Mrs. Henry) Breyer, Haverford, Pennsylvania, 1972-2000

Mr. and Mrs. Henry Breyer, III, New York, and Palm Beach, Florida, 2000-19



Jacek Malczewski
Polish, 1854-1929
Portrait of a Faun
Signed J Malczewski (II)
Oil on board
26 3/4 x 20 1/4 inches (67.9 x 51.4 cm)
Estimate: \$175,000-225,000
Auction May 14



Man Ray
American, 1890-1976
Daffodils, 1913
Signed *Man Ray* (lr)
Oil on canvas
24 x 14 1/4 inches (61 x 36.2 cm)
Auction May 14

Provenance:
Dorothy Ray Goodbread, Rydal, Pennsylvania
Sale, Christie's, New York, December 4, 1987, lot 267
Salander O'Reilly Galleries, Inc., New York
Private collection, New York
Estate of the above



Reuven Rubin
Israeli, 1893-1974
Landscape in Galilee
Signed *Rubin* in Hebrew and Latin
characters (ll); dated 1967 and inscribed as
titled on the stretcher
Oil on canvas
21 1/4 x 29 inches (54 x 73.7 cm)
Estimate: \$60,000-80,000
Auction May 14



Jane Peterson

American, 1876-1965

Beach Scene, Edgartown

Signed *Jane Peterson* (lr)

Oil on canvas

18 x 24 inches (45.7 x 61 cm)

Estimate: \$60,000-80,000

Auction May 14

Provenance:

Robert Schoelkopf Gallery, New York

Hirschl and Adler Gallery, New York



Jane Peterson

American, 1876-1965

Old Red House, Venice

Signed *Jane Peterson* (lr)

Oil on board

18 x 18 inches (45.7 x 45.7 cm)

Estimate: \$30,000-50,000

Auction May 14

Provenance:

Private collection, Bethesda, MD, circa 1960

Thence by descent

Sotheby's, New York, Dec. 2, 2010, lot 41



Jean Baptiste Camille Corot (and Studio)

French, 1796-1875

Essoye (Aub) La vanne

Signed (II)

Oil on canvas

19 3/4 x 15 3/4 inches

Estimate: \$60,000-90,000

Auction May 14



Frederic Arthur Bridgman

American, 1847-1928

Afternoon Hours

Signed F. A. Bridgman (lr)

23 3/4 x 36 1/2 inches (60.3 x 92.7 cm)

Estimate: \$20,000-40,000

Auction May 14

The Collection of Joanne B. Breyer

Provenance:

Christie's, London, Oct. 14, 2007, lot

28 (as Domestic Interior Scene)



Colin Campbell Cooper

American, 1856-1937

The Taj Mahal, Moonlight

Signed Colin Campbell Cooper (lr)

Oil on canvas

29 x 36 1/4 inches (73.7 x 92.1 cm)

Estimate: \$20,000-40,000

Auction May 14

Provenance:

Memorial Art Gallery, Rochester NY

Private collection, Rochester, NY, acquired
circa 1962

Thence by descent from the above

Christie's, New York, May 20, 2009, lot 100