

# DOYLE

*Property Of A Fifth Avenue  
Philanthropist: Part I*



Thursday, November 7, 2024  
More information at [Doyle.com](http://Doyle.com)

# DOYLE

## PROPERTY OF A FIFTH AVENUE PHILANTHROPIST

### **Auction**

Thursday, November 7, 2024 &  
Friday, November 8, 2024  
both at 10am Eastern

### **Exhibition**

Sat, Nov 2, Noon – 5pm  
Sun, Nov 3, Noon – 5pm  
Mon, Nov 4, Noon – 5pm

### **Location**

**DOYLE Auctioneers & Appraisers**  
175 East 87th Street  
New York, NY 10128

This Gallery Guide was created on  
10-22-24 Please see addendum for any  
changes.

Please check [doyle.com](https://doyle.com) for our  
Terms of Guarantee and Conditions of Sale.



[Sale Info](#)



[View Lots and Place Bids](#)



# DOYLE

Property of a Fifth Avenue Philanthropist Nov 7, 2024 - Nov 8, 2024



1

## Empire Style Patinated and Gilt Metal Triangular Umbrella Stand

Estate / Collection: Property of a Fifth Avenue Philanthropist

The base applied with foliate scrolls, the corners with busts of putti, all raised on claw feet. *Height 27 1/4 inches (69 cm), width 16 1/2 inches (42 cm).*

**\$300-500**



2

## Louis XVI Marble Top Inlaid Mixed Woods Demilune Commode Nantes, late 18th century

Estate / Collection: Property of a Fifth Avenue Philanthropist

The shaped top above three frieze drawers, over a pair of long drawers flanked by doors, raised on tapering turned legs, stamped A. Lemesle. *Height 34 1/2 inches (87.5 cm), width 41 inches (104 cm), depth 18 3/4 inches (47.5 cm).*

**\$3,000-5,000**



3

## Louis XVI Gilt Wood Border Glass Mirror

Estate / Collection: Property of a Fifth Avenue Philanthropist

The arched crest with a draped flower-filled urn and foliate swags, which continue down the sides. *Height 56 inches (142.4 cm), width 33 inches (84 cm).*

**\$1,000-1,500**



4

## Louis XV Walnut Upholstered Corner Chair 18th Century

Estate / Collection: Property of a Fifth Avenue Philanthropist

The arched crest above padded arms, the upholstery with nailhead trim, raised on cabriole legs. *Height of back 33 1/2 inches (85 cm), height of seat 16 1/2 inches (42 cm), width 25 inches (63.5 cm), depth 23 inches (58 cm).*

**\$800-1,200**

# DOYLE

Property of a Fifth Avenue Philanthropist Nov 7, 2024 - Nov 8, 2024



5

**Pair of Louis XVI Style Gilt Metal Mounted Dark Rosewood Hanging Corner Shelves**  
20th Century

Estate / Collection: Property of a Fifth Avenue Philanthropist  
The bowed shelves flanked by bell flower mounts. *Height 23 1/2 inches (59.5 cm), width 19 inches (48.2 cm), depth 14 inches (36 cm).*

**\$200-300**



6

**Pair of Louis XV Style Gilt Bronze Shell-Work Molded Candlestick Lamps**

Estate / Collection: Property of a Fifth Avenue Philanthropist  
*Height 10 inches (26 cm), diameter of base 6 1/2 inches (17 cm).*

**\$700-1,000**



7

**Pair of Louis XVI Style Gilt Bronze Three-Light Sconces**

Estate / Collection: Property of a Fifth Avenue Philanthropist  
Each ribbon tied quiver back plate issuing a winged herm and scrolling branches. *Height 22 1/2 inches (27 cm), width 14 1/4 inches (36 cm), depth 9 1/4 inches (23 cm).*

**\$1,200-1,800**



# DOYLE

Property of a Fifth Avenue Philanthropist Nov 7, 2024 - Nov 8, 2024



8

**Pair of Chelsea Porcelain Chinoiserie Figural Flower-Holders  
Circa 1758**

Estate / Collection: Property of a Fifth Avenue Philanthropist

With gold anchor marks, both modeled by Joseph Willems; each modeled holding a large molded and pierced pot painted with loose bouquets and scattered sprays, she in a pink-line floral tunic and turquoise robe, a yellow ribbon in her hair, a matching sash at her waist with iron-red bow; he in black headdress, turquoise lined pink robe and floral apron, with laced knee-high yellow boots, the rocaille-molded base enriched in gilt and applied with flowers, *height of taller 7 7/8 inches (20 cm)*.

Victoria & Albert Museum, object nos. C.695-1922 and C.122-1995. Compare, Reginald Blunt, 'The Cheyne Book of Chelsea China and Pottery', Exhibition Catalogue, (1924), pl. 19, no. 233. George Brunel, et al, 'Pagodes et Dragons: Exotisme et Fantaisie dans l'Europe Rococo, 1720-1770', Exposition Paris in Association with the Paris-Musées: Musée Cernuschi, (2007). Another similar pair was sold, Christie's, London, 2 June 1986, lot 283; and 31 May 2012, lot 553.

**\$1,000-2,000**



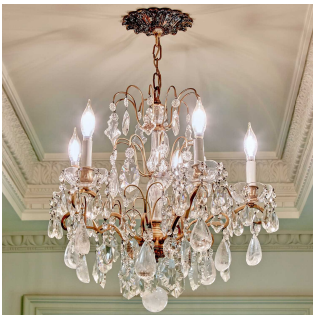
9

**Sevres Style Porcelain Gilt-Bronze Mounted Turquoise-Ground Pot-Pourri Vase and Cover  
Mid-19th century**

Estate / Collection: Property of a Fifth Avenue Philanthropist

The center painted with a seated child holding grapes within a gilt cartouche, the obverse with a cluster of fruit and flowers flanked by upright scrolled handles molded with acorns, on a socle foot and canted square vase. *Height 8 inches (20.3 cm)*.

**\$300-500**



10

**Louis XV Style Patinated Metal, Glass and Rock Crystal Five-Light Chandelier  
20th Century**

Estate / Collection: Property of a Fifth Avenue Philanthropist

The fluted stem issuing scrolling branches and hung with tiers of variously shaped pendants. *Height 22 inches (56 cm), diameter 20 inches (51 cm)*.

**\$1,200-1,800**

# DOYLE

Property of a Fifth Avenue Philanthropist Nov 7, 2024 - Nov 8, 2024



11

**Pair of Louis XVI Style Tapestry Upholstered Painted Wood Fauteuils à la Reine**

Estate / Collection: Property of a Fifth Avenue Philanthropist

Each with an oval back with tied husk border, above padded arms with carved acanthus and guilloche frame, with a serpentine seat, raised on tapering fluted legs. *Height of back 37 inches (94 cm), height of seat 16 inches (41 cm), width 26 1/2 inches (67 cm), depth 26 inches (66 cm).*

**\$1,000-1,500**



12

**Louis XV Parquetry Galleried Table à Écrire  
Late 18th century**

Estate / Collection: Property of a Fifth Avenue Philanthropist

The shaped rectangular top inlaid with a trellis and with three quarter pierced gallery, above a drawer fitted with a leather writing surface and a mirror flanked by covered wells, raised on cabriole legs. *Height 30 inches (77 cm), width 26 inches (66 cm), depth 16 1/2 inches (41 cm).*

**\$5,000-7,000**



13

**Small Chinese Enameled Porcelain Jardiniere  
Republic Period**

Estate / Collection: Property of a Fifth Avenue Philanthropist

Of tapering rectangular form; decorated in the famille rose palette. *Width 7 inches.*

**\$200-300**



14

**Set of Four Louis XV Style Upholstered Painted Wood Chaises Voyeuses**

Estate / Collection: Property of a Fifth Avenue Philanthropist

Each with a T-form back, with nailhead trim, raised on cabriole legs. *Height of back 33 1/2 inches (85 cm), height of seat 18 inches (46 cm), width 16 1/2 inches (42 cm), depth 19 inches (48 cm).*

**\$800-1,200**



# DOYLE

Property of a Fifth Avenue Philanthropist Nov 7, 2024 - Nov 8, 2024



15

## Louis XV Style Porcelain Mounted Gilt Metal Three Light Chandelier

Estate / Collection: Property of a Fifth Avenue Philanthropist

The scrolling open frame with vines of porcelain flowers centering a figure of a maiden, issuing three horn-form branches. *Height 27 inches (69 cm), diameter 17 1/2 inches (44 cm).*

\$300-500



16

## Pair of Regence Giltwood Torchère Stands Early 18th century

Estate / Collection: Property of a Fifth Avenue Philanthropist

Each circular top over a tapering triangular stem with acanthus leaves, raised on a scrolled tripod base with a circular top. *Height 43 3/4 inches (111 cm), diameter of top 11 1/4 inches (28.5 cm), diameter of base 14 inches (36 cm).*

Provenance: Jacques Perrin, Paris, 1990s

\$4,000-6,000



17

## Pair of Louis XVI Damask Upholstered Giltwood Canapés Jean-Baptiste Boulard, Paris, last quarter 18th century

Estate / Collection: Property of a Fifth Avenue Philanthropist

Each arched crest with rope twist border, above padded arms and acanthus and guilloche carved frame, with serpentine seat, raised on turned stop fluted legs, stamped J. B. Boulard. *Height of back 38 inches (96 cm), height of seat 18 inches (46 cm), width 46 inches (117 cm), depth 25 inches (64 cm).*

Provenance: Jacques Perrin, Paris, 1999

\$10,000-20,000



18

## Pair of Louis XVI Style Upholstered Giltwood Foot Stools

Estate / Collection: Property of a Fifth Avenue Philanthropist

The square upholstered top above a rail carved with oak leaves, raised on turned fluted legs topped with rosettes. *Height 8 inches (20 cm), 15 1/2 inches (39 cm), square.*

\$1,500-2,500

# DOYLE

Property of a Fifth Avenue Philanthropist Nov 7, 2024 - Nov 8, 2024



19

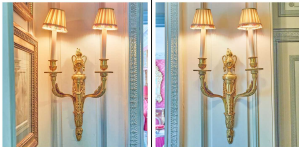
**Louis XVI Gilt Metal Mounted Mahogany Galleried Side Table**  
**Jean Jacques Paffrat, Paris, 1790s**

Estate / Collection: Property of a Fifth Avenue Philanthropist

The rectangular three quarter galleried marble top above three drawers with beaded borders, the case with side handles, raised on tapering square legs, stamped *Paffrat*. *Height 29 inches (74 cm), width 19 1/2 inches (49 cm), depth 12 3/4 inches (32.5 cm).*

Provenance: Jacques Perrin, Paris, 1998

**\$4,000-6,000**



20

**Pair of Louis XVI Style Gilt Bronze Two Light Sconces**  
**20th Century**

Estate / Collection: Property of a Fifth Avenue Philanthropist

Each with a draped urn-form finial, above a draped fluted stem issuing foliate clad branches. *Height 18 inches (46 cm), width 12 1/2 inches (32 cm).*

**\$800-1,200**



21

**Louis XV Gilt Bronze Mounted Rosewood, Tulipwood and Kingwood Tall Case Clock**  
**Attributed to Adrien-Jerome Jollain, mid 18th century**

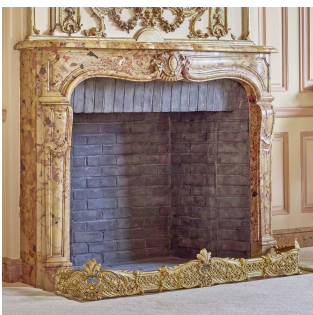
Estate / Collection: Property of a Fifth Avenue Philanthropist

The cartouche shaped hood with a mask and foliate scrolls, topped by an armillary sphere, above a circular dial, over a trophy and mask, the baluster case on plinth base centering a floral medallion. *Height 7 feet (213 cm), width 19 1/4 inches (49 cm), depth 10 inches (26 cm).*

This clock is attributed to Adrien-Jerome Jollain based on a comparison to a similar clock published Pierre Kjellberg, *Le Mobilier Francais du XVIIIe Siecle*, Paris, 1989, pg 445.

Provenance: Jacques Perrin, Paris, 1998

**\$12,000-18,000**



22

**Rococo Style Gilt Bronze Fireplace Fender**

Estate / Collection: Property of a Fifth Avenue Philanthropist

The shaped crest above with pierced lattice, foliage and flowers. *Height 6 inches (15 cm), length 42 1/2 inches (108 cm), depth 10 inches (25.5 cm).*

**\$300-400**



# DOYLE

Property of a Fifth Avenue Philanthropist Nov 7, 2024 - Nov 8, 2024



23

## Pair of Empire Style Gilt Bronze Candlesticks

Estate / Collection: Property of a Fifth Avenue Philanthropist

Each reeded stem with acanthus capital, on a circular base with grape vine border. *Height 13 inches (33 cm), diameter of base 5 3/4 inches (14.5 cm).*

**\$400-600**



24

## Pair of Louis XVI Gilt Bronze Chenets 18th Century

Estate / Collection: Property of a Fifth Avenue Philanthropist

Each with a figure of a bird on a scrolling shellwork base. *Height 12 inches (30 cm), width 13 inches (33 cm).*

Provenance: Jacques Perrin, Paris, 1990s

**\$2,000-4,000**



25

## Louis XVI Gilt Bronze and Marble Clock

Noel Bourret, Paris, bronze attributed to Pierre Gouthiere, late 18th century

Estate / Collection: Property of a Fifth Avenue Philanthropist

The bird finial over a group of doves, flanked by flaming urns, over a circular dial, flanked by mermaids, on a shaped oval base raised on button feet. *Height 17 1/2 inches (49 cm), width 10 1/2 inches (27 cm).*

Provenance: Jacques Perrin, Paris, 1999

**\$6,000-9,000**



26

## Pair of Louis XV Style Gilt Bronze Three-Light Candelabra

Estate / Collection: Property of a Fifth Avenue Philanthropist

*Height 12 inches (30 cm), width 8 1/2 inches (21.5 cm).*

**\$1,000-1,500**

# DOYLE

Property of a Fifth Avenue Philanthropist Nov 7, 2024 - Nov 8, 2024



27

**French Terracotta Figure of Female Satyr and Two Bacchantes**

Estate / Collection: Property of a Fifth Avenue Philanthropist  
Inscribed *Clodion*. Height 22 inches (56 cm), width 13 1/4 inches (33.5 cm).

**\$2,000-3,000**



28

**Pair of Louis XV Style Gilt Bronze Three-Light Candelabra Lamps with Figure on Base**

Estate / Collection: Property of a Fifth Avenue Philanthropist  
Each base supporting a figure flanked by baskets. Height 10 1/2 inches (27 cm), width 9 inches (23 cm).

**\$500-700**



29

**Pair of Paris (Jacob Petit) Gilt-Bronze Mounted Blue-Ground Two-Handled Vases on Plinths**  
**Circa 1840**

Estate / Collection: Property of a Fifth Avenue Philanthropist  
Oviform, the flaring neck gilt with fruiting grapevine, each painted front and back with an oval panel of blossoming garden flowers including tulips, hydrangeas and roses within a beaded rinceau surround, flanked by gilt handles with bearded mask terminals, on a gilt socle, the affixed stepped square base enriched with diamond-shaped devices enclosing a central rosette and radiating anthemion. Height 20 1/4 inches (74.3 cm).

For a marked pair of vases of this form at auction, see Christie's, London, 10 April 2019, lot 222. For a garniture of three vases including this form, see Régine de Plinval de Guillebon, 'Paris Porcelain 1770-1850' (1972), p. 239, no. 174.

**\$2,000-3,000**



# DOYLE

Property of a Fifth Avenue Philanthropist Nov 7, 2024 - Nov 8, 2024



30

**Pair of French Porcelain Green-Ground Footed Orange Tubs**  
**Late 19th century**

Estate / Collection: Property of a Fifth Avenue Philanthropist

In the Jacob Petit Style of squared form, the flared rim pierced as a gallery, painted front and back with pastoral figures tending animals within gilt trellis cartouches, the sides with flower-filled baskets among gilt scrollwork, on four paw feet. *Height 6 inches (15.24 cm).*

**\$400-600**



31

**Pair of Meissen Porcelain Figural Gilt-Bronze Arcade and Tole Branch Chambersticks**  
**The porcelain figures 19th century, blue crossed sword mark to one**

Estate / Collection: Property of a Fifth Avenue Philanthropist

Modeled as a putto and companion, he in the guise of a mendicant with doffed black hat; she in a gilt frogged yellow jacket and bare feet, both set within an arched trellis applied with the tole branches and porcelain flowerheads, raised on four ball feet. *Height 7 3/4 inches (17.8 cm).*

**\$700-900**



32

**Louis XV Gilt Bronze Cartel Clock**  
**Fourrier, Paris, mid 18th century**

Estate / Collection: Property of a Fifth Avenue Philanthropist

The enamel dial surrounded by flowering branches, the bracket base centering a pair of love birds. *Height 28 inches (71 cm), width 15 inches (38 cm).*

Provenance: Patrick Perrin, Paris, 1990s

**\$4,000-6,000**



33

**Sevres Style Porcelain Pink and Pale Yellow Ground Two-Handled Vase Mounted as a Lamp**  
**Mid-19th century**

Estate / Collection: Property of a Fifth Avenue Philanthropist

Of shield-shape, the shoulder with coiled vine handles above molded grape terminals, the center painted with birds within rocaille scrolls and shells, above stiff leaf tips, on a socle foot and square base, offered with a later green silk shade. *Height of vase 14 inches (35.5 cm).*

**\$400-600**

# DOYLE

Property of a Fifth Avenue Philanthropist Nov 7, 2024 - Nov 8, 2024



34

## Pair of Louis XV Style Patinated and Gilt Bronze Figures of Putti

Estate / Collection: Property of a Fifth Avenue Philanthropist

Each depicted holding a flower. *Height 10 3/4 inches (27.5 cm), diameter of base 5 1/4 inches (13.5 cm).*

**\$500-700**



35

## Set of Four Louis XVI Style Gilt Bronze Two-Light Sconces

Estate / Collection: Property of a Fifth Avenue Philanthropist

Each with a tied ribbon crest above a tassle and laurel swag back issuing a pair of reeded branches. *Height 14 1/2 inches (37 cm), width 11 inches (28 cm), depth 5 3/4 inches (14.5 cm).*

**\$1,500-2,500**



36

## Pair of Chinese Greyish-Blue Porcelain Garden Seats

Estate / Collection: Property of a Fifth Avenue Philanthropist

Of barrel form and with openwork decorative panels to sides. *Height 17 1/4 inches.*

**\$200-300**



37

## Chinese Famille Rose Porcelain Planter Late Qing - Republic Period

Estate / Collection: Property of a Fifth Avenue Philanthropist

Of ovoid form, enameled to show colorful blossoms below a shaped ruyi band at mouth. *Height 13 inches.*

**\$700-900**

# DOYLE

Property of a Fifth Avenue Philanthropist Nov 7, 2024 - Nov 8, 2024



38

**Louis XV Painted and Caned Fauteuil à la Reine with Silk Damask Cushions**  
**Late 18th century**

Estate / Collection: Property of a Fifth Avenue Philanthropist

The arched crest with carved foliage, above padded arms, the chair rail and cabriole legs carved with floral sprays. *Height of back 41 1/2 inches (105.5 cm), height of seat 17 inches (43 cm), width 29 inches (74 cm), depth 32 inches (81.5 cm).*

**\$1,000-2,000**



39

**Louis XV / XVI Gilt Bronze Mounted Tulipwood and Kingwood Commode**  
**Roger Vandercruse LaCroix, Paris, mid 18th century**

Estate / Collection: Property of a Fifth Avenue Philanthropist

The shaped marble top above two deep drawers, one applied with urns, flanked by doors, raised on cabriole legs ending in paw feet. *Height 34 1/2 inches (87 cm), width 37 1/2 inches (95 cm), depth 17 inches (43 cm).*

**\$12,000-18,000**



40

**Louis XVI Giltwood Pier Mirror**  
**Late 18th century**

Estate / Collection: Property of a Fifth Avenue Philanthropist

The divided plate crested with branches and agrarian trophy above swag husks, the rectangular frame with beaded border and square rosettes to lower corners. *Height 64 inches (163 cm), width 29 inches (74 cm).*

**\$2,500-3,500**



41

**Pair of Louis XVI Style Gilt Bronze Three-Light Lamps with Silk Shades**

Estate / Collection: Property of a Fifth Avenue Philanthropist

Each urn-form stem issuing three scrolling branches, on a spiral fluted circular base raised on three button feet. *Height 11 3/4 inches (30 cm), diameter 7 inches (18 cm).*

**\$1,500-2,000**

# DOYLE

Property of a Fifth Avenue Philanthropist Nov 7, 2024 - Nov 8, 2024



42

**Louis XVI Gilt Bronze Mounted Parquetry Bonheur du Jour**  
**Attributed to Jean-Francois Hache, Paris, last quarter 18th century**

Estate / Collection: Property of a Fifth Avenue Philanthropist

The rectangular case inlaid with a trellis pattern, the three quarter galleried top above a pair of doors opening to a fitted interior, over a hinged leather inset writing surface over a drawer fitted with an adjustable book rest, raised on tapering square legs inlaid with bell flowers. *Height 40 inches (101.5 cm), width 30 inches (76 cm), depth 17 3/4 inches (45 cm).*

Provenance: Jacques Perrin, Paris, 1998

**\$5,000-7,000**



43

**Louis XVI Gilt Bronze Three-Light Bouillotte Lamp**  
**Late 18th century**

Estate / Collection: Property of a Fifth Avenue Philanthropist

With a pierced dished base. *Height overall 26 inches (66 cm), height of base 9 3/4 inches (25 cm), diameter of base 7 3/4 inches (19.5 cm).*

Provenance: Philippe Perrin, Paris, 2002

**\$800-1,200**



44

**Regence Giltwood Marble Top Center Table**  
**18th Century**

Estate / Collection: Property of a Fifth Avenue Philanthropist

The rectangular top above a frieze with lattice and shell, raised on cabriole legs. *Height 29 inches (74 cm), width 32 1/2 inches (82.5 cm), depth 21 inches (53.5 cm).*

**\$800-1,200**



45

**Pair of Sevres Porcelain (Later-Decorated) Gilt-Bronze Mounted Pot-Pourri Vases and Covers**

Estate / Collection: Property of a Fifth Avenue Philanthropist

The porcelain 18th century, the decoration mid-19th century; each domed cover surmounted by a putto finial above paired painted bird and gilt foliate cartouches, the rim set with a pierced gallery flanked by dragon handles, the bowl center painted with a vignette of a seated child within a similar gilt surround, the obverse with a tight bouquet, raised on a rocaille-scroll foot. *Height 8 inches (20.3 cm), width 6 1/2 inches (16.7 cm).*

**\$500-700**



# DOYLE

Property of a Fifth Avenue Philanthropist Nov 7, 2024 - Nov 8, 2024



46

## Pair of Gilt Bronze Mounted Samson Porcelain Chinese Style Vases

Estate / Collection: Property of a Fifth Avenue Philanthropist

Each flattened baluster-form with floral reserves, with upswept foliate loop handles with cattails, raised on pierced bases. *Height 19 1/2 inches (49.5 cm), width 10 1/4 inches (26 cm).*

**\$1,500-2,500**



47

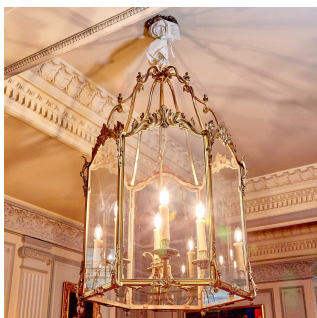
## Pair of Chelsea Style Porcelain Bocage Figures of Musicians

Late 19th century, spurious gold anchor marks, attributed to Samson

Estate / Collection: Property of a Fifth Avenue Philanthropist

Each modeled standing before flowering plants, she playing a lute, a lamb at her side; he playing a bagpipes, a hound at his feet, the rocaille-molded scroll and shell bases applied with flowers. *Height 10 3/4 inches (27.3 cm).*

**\$200-300**



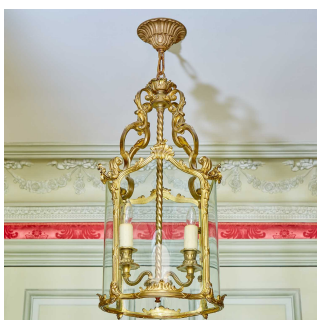
48

## Louis XV Style Gilt Bronze Hexagonal Four-Light Hanging Lantern

Estate / Collection: Property of a Fifth Avenue Philanthropist

Hexagonal with foliate arched panels. *Height 39 inches (100 cm), diameter 25 3/4 inches (65.5 cm).*

**\$2,000-3,000**



49

## Louis XV Style Gilt Bronze and Glass Two-Light Hanging Lantern

Estate / Collection: Property of a Fifth Avenue Philanthropist

The arched panels with rocaille crest, all with a scrolling openwork frame. *Height 24 1/2 inches (62 cm), diameter 12 inches (31 cm).*

**\$800-1,200**

# DOYLE

Property of a Fifth Avenue Philanthropist Nov 7, 2024 - Nov 8, 2024



50

## Louis XV Style Brass and Glass Hanging Lantern

Estate / Collection: Property of a Fifth Avenue Philanthropist

The foliate arched crests with foliate scrolls to corners. *Height 19 3/4 inches (50 cm), diameter 12 1/2 inches (32 cm).*

**\$600-900**



51

## Pair of Louis XVI Giltwood Bergères à la Reine Georges Jacob, Paris, late 18th century

Estate / Collection: Property of a Fifth Avenue Philanthropist

With arched crest above padded arms, the frames carved with guilloche and foliage, raised on turned fluted legs, stamped *G. Jacob*. *Height of back 39 inches (100 cm), height of seat 17 inches (44 cm), width 27 1/2 inches (67 cm), depth 25 inches (64 cm).*

Provenance: Jacques Perrin, Paris, 1997

**\$10,000-15,000**



52

## Pair of Louis XVI Velvet Upholstered Painted Wood Tabourets Attributed to Georges Jacob, Paris, last quarter 18th century

Estate / Collection: Property of a Fifth Avenue Philanthropist

Each circular cushion above a guilloche carved frieze, raised on reeded cabriole legs with foliate carved knees. *Height 17 1/4 inches (44 cm), diameter 16 inches (40.5 cm).*

Provenance: Jacques Perrin, Paris, 1998

**\$5,000-7,000**



53

## Louis XVI Style Porcelain Inset Parquetry Stand

Estate / Collection: Property of a Fifth Avenue Philanthropist

With two circular galleried tiers, the upper porcelain with a tied basket of flowers, raised on fluted stem on three hipped legs ending in scroll feet. *Height 31 1/4 inches (79 cm), diameter of top tier 9 1/4 inches (23.5 cm), diameter of base 17 inches (43 cm).*

The Sevres Style Porcelain Circular Tableau in the manner of Edme-Francois Bouilliat, painted with a ribbon-tied basket of flowers, the border with scattered flowers between gilt and blue entwined ribbons.

**\$800-1,200**

# DOYLE

Property of a Fifth Avenue Philanthropist Nov 7, 2024 - Nov 8, 2024



54

**Louis XVI Parquetry Table à Écrire / Bonheur du Jour**  
**Roger Vandercruse LaCroix, Paris, mid 18th century**

Estate / Collection: Property of a Fifth Avenue Philanthropist

Rectangular, inlaid overall with rosettes in a diamond lattice, the superstructure with three quarter gallery above a pair of doors and drawers over a drawer fitted with a leather inset writing slide, raised on tapering square legs with a galleried shelf stretcher, stamped R.V.L.C. Height 42 1/4 inches (107 cm), width 23 1/2 inches (59.6 cm), depth 15 1/4 inches (39 cm).

Provenance: Jacques Perrin, Paris, 1998

**\$10,000-15,000**



55

**Assembled English Porcelain Flower-Encrusted Five-Piece Garniture**  
**Circa 1830-40, the vases perhaps Samuel Alcock, the perfume bottles perhaps Rockingham**

Estate / Collection: Property of a Fifth Avenue Philanthropist

Of 'Coalbrookdale-Type' including three pear shape vases, in two sizes, each with trumpet mouth and spreading foot, the shoulder flanked by double-loop yellow scrolled handles, the body painted and applied with garden flowers including: dahlia, convolvulus and primrose, the mouth and foot trimmed in puce; the two tear-drop flower-encrusted scent-bottle and covers enriched with gilt scrolls. Height of tallest 10 1/2 inches (26.7 cm).

For a garniture of similarly shaped double-loop scroll handled vases identified as 'Coalbrookdale-Type', see The Queensland Art Gallery (QAG), Australia, accession no. 1983.043.003.1-3; for similar perfume bottles and covers, see the Minneapolis Museum of Art, accession no. 92.158.17.1a,b.

**\$600-800**



56

**Sevres Style Porcelain Blue-Ground Spill Vase**  
**Late 19th century**

Estate / Collection: Property of a Fifth Avenue Philanthropist

Of roccaille-drapery form, a gilt swag below the rim, the center painted in monochrome puce with two putti releasing doves, within gilt enriched roccaille-molded scrolls, on four feet. Height 4 inches (10.2 cm), width 5 3/4 inches (13.3 cm).

**\$200-300**

# DOYLE

Property of a Fifth Avenue Philanthropist Nov 7, 2024 - Nov 8, 2024



57

**English Porcelain Peach-Ground Flower-Encrusted Two-Handled Pot-Pourri Jar, Cover and Liner**

**Early 19th century**

Estate / Collection: Property of a Fifth Avenue Philanthropist

Globular with branch handles, the pierced cover with a clustered flower finial, the shoulder applied with large flowerheads and trailing flowering vine, the side painted with long tailed birds among flowers and spreading gilt coral-like branches, on a rocaille-molded apron foot. *Height 8 3/4 inches (22.2 cm).*

**\$300-500**



58

**Pair of Louis XVI Giltwood Fauteuils à la Reine**

**Pierre Othon, Paris, last quarter 18th century**

Estate / Collection: Property of a Fifth Avenue Philanthropist

Each with an arched crest above padded arms, the frames carved with guilloche and foliage, raised on tapering stop fluted legs, stamped *Othon*. *Height of back 37 1/2 inches (95 cm), height of seat 16 3/4 inches (42.5 cm), width 26 1/2 inches (67 cm), depth 25 inches (64 cm).*

Provenance: Jacques Perrin, Paris, 1998

**\$8,000-12,000**



59

**Louis XV Style Upholstered Giltwood Bench**

Estate / Collection: Property of a Fifth Avenue Philanthropist

The rectangular seat above a frieze carved with shells and rocaille, raised on cabriole legs with foliate carved knees. *Height 20 inches (51 cm), width 27 1/4 inches (69 cm), depth 21 inches (53.5 cm).*

**\$400-600**



60

**Italian Neoclassical Giltwood and Pietra Dura Gueridon**

**First quarter 19th century**

Estate / Collection: Property of a Fifth Avenue Philanthropist

The circular top inlaid with hardstone specimens, including lapis lazuli, porphyry, malachite, and agate in concentric circles, above a frieze of repeating anthemion, with lion's masks over animal-form legs ending in paw feet. *Height 27 1/4 inches (69 cm), diameter 18 1/4 inches (46.2 cm).*

**\$3,000-5,000**



# DOYLE

Property of a Fifth Avenue Philanthropist Nov 7, 2024 - Nov 8, 2024



61

## Louis XVI Style Gilt Bronze Candlestick Lamp

Estate / Collection: Property of a Fifth Avenue Philanthropist  
*Height 11 1/2 inches (29.2 cm), diameter of base 5 3/4 inches (14.5 cm).*

**\$300-500**



62

## Pair of Louis XV Style Two-Light Candelabra Lamps with Fringed Shades

Estate / Collection: Property of a Fifth Avenue Philanthropist  
*Height overall 17 3/4 inches (45 cm), height of base only 7 1/2 inches (19 cm), width 9 inches (23 cm).*

**\$1,000-2,000**



63

## Group of Nine Empire Style Gilt-Metal Mounted Cut Glass Trinket Boxes

Estate / Collection: Property of a Fifth Avenue Philanthropist  
Comprising seven rectangular examples, one oval example, and one square example, each in colorless glass, unmarked. *Height of tallest 5 inches (12.7 cm), width 5 1/2 inches (14 cm).*

**\$400-600**



64

## Group of Eight Empire Style Gilt-Metal Mounted Cut Glass Trinket Boxes

Estate / Collection: Property of a Fifth Avenue Philanthropist  
Comprising five rectangular examples, two oval examples, and one square example, each in colorless glass, unmarked. *Height of tallest 5 inches (12.7 cm), width 5 1/2 inches (14 cm).*

**\$400-600**

# DOYLE

Property of a Fifth Avenue Philanthropist Nov 7, 2024 - Nov 8, 2024



65

**Group of Louis XVI Style Gilt Metal Picture Frames**  
**20th Century**

Estate / Collection: Property of a Fifth Avenue Philanthropist

Various shapes and sizes, many with tied ribbon crest. Approximately eight pieces.

*Height of largest 13 1/4 inches (34 cm), width 9 1/2 inches (24 cm); height of smallest 2 inches (5 cm), width 1 1/2 inches (4 cm).*

**\$400-600**



66

**Group of Seven Louis XVI Style Gilt Metal Picture Frames**  
**20th Century**

Estate / Collection: Property of a Fifth Avenue Philanthropist

In various sizes and shapes. Approximately seven pieces. *Height of largest 8 inches (20 cm), width 6 inches (15.2 cm); height of smallest 3 1/4 inches (8.5 cm), width 2 1/2 inches (6.5 cm).*

**\$400-600**



67

**Pair of Sevres Style Porcelain 'Jeweled' Pink and Green Ground Cache Pots**  
**19th century**

Estate / Collection: Property of a Fifth Avenue Philanthropist

With spurious blue interlaced L's marks; after the Sèvres 'seaux à verre', each painted with a quayside view within a 'turquoise' and 'pearl' enameled 'jewel' surround, the obverse similarly 'jeweled' enclosing a tight fruit and flower bouquet, the handles, lip and footrim in green and gilt. *Height 6 inches (15.2 cm), width 9 inches (22.8 cm).*

**\$600-800**



68

**Pair of Raspberry Silk Brocade Upholstered Loose Cushion Settees**  
**20th Century**

Estate / Collection: Property of a Fifth Avenue Philanthropist

Each with drapery and tassel fringe. *Height of back 33 1/2 inches (85 cm), height of seat 18 1/2 inches (47 cm), width 59 inches (150 cm), depth 37 1/4 inches (94.5 cm).*

**\$1,000-2,000**

# DOYLE

Property of a Fifth Avenue Philanthropist Nov 7, 2024 - Nov 8, 2024



69

**Geoffrey Bradfield Acrylic Low Table**  
**Late 20th century**

Estate / Collection: Property of a Fifth Avenue Philanthropist

The rectangular top raised on shaped square legs. *Height 17 1/4 inches (44 cm), length 48 inches (122 cm), depth 28 inches (71 cm).*

**\$700-1,000**



70

**Regence Giltwood Marble Inset Occasional Table**  
**1720s**

Estate / Collection: Property of a Fifth Avenue Philanthropist

The rectangular marble top above an openwork frieze of foliate scrolls centering a stylized shell, raised on cabriole legs with foliage and serpents. *Height 27 1/2 inches (70 cm), width 29 1/2 inches (75 cm), depth 19 1/2 inches (50 cm).*

**\$1,000-2,000**



71

**Three Continental Gilt Metal Mounted Agate Boxes**  
**20th Century**

Estate / Collection: Property of a Fifth Avenue Philanthropist

Each rectangular with hinged cover and raised on four ball feet. *Lengths 2 1/2 inches (6.5 cm) to 2 3/4 inches (7 cm).*

**\$500-700**



72

**Group of Three Continental Blue Opaline Glass Trinket Boxes**

Estate / Collection: Property of a Fifth Avenue Philanthropist

Comprising a shell-form example, square example and a cylindrical example. *Height of tallest 4 1/2 inches (11.4 cm), width 3 1/4 inches (8.2 cm).*

**\$150-250**

# DOYLE

Property of a Fifth Avenue Philanthropist Nov 7, 2024 - Nov 8, 2024



73

## Group of Four Continental Gilt-Metal Mounted Green Opaline Glass Boxes

Estate / Collection: Property of a Fifth Avenue Philanthropist

Comprising two rectangular examples and two oval examples, each with a hinged lid. *Height of tallest 4 inches (10.1 cm), width 5 1/4 inches (13.3 cm).*

**\$300-500**



74

## Paul Millet for Sevres Gilt Metal Mounted Glazed Porcelain Musical Box 20th Century

Estate / Collection: Property of a Fifth Avenue Philanthropist

The square box with foliate scroll base. *Height 4 1/4 inches (11 cm), 3 1/2 inches (9 cm), square.*

**\$400-600**



75

## Pair of Louis XVI Style Upholstered Giltwood Lits de Chien

Estate / Collection: Property of a Fifth Avenue Philanthropist

Each with a guilloche carved frame, raised on turned fluted legs. One stamped Tardif Paris. *Height of back 14 inches (36 cm), height of seat 7 3/4 inches (19.5 cm), width 15 3/4 inches (40 cm), depth 13 inches (33 cm).*

**\$800-1,200**



76

## Louis XVI Style Upholstered Painted Wood Cave a Chien 20th Century

Estate / Collection: Property of a Fifth Avenue Philanthropist

The oval loose cushion top with reeded frame. *Height 19 3/4 inches (50 cm), width 21 inches (53.5 cm), depth 16 1/2 inches (42 cm).*

**\$300-500**



# DOYLE

Property of a Fifth Avenue Philanthropist Nov 7, 2024 - Nov 8, 2024



77

**Louis XV / XVI Gilt Bronze Mounted Pictorial Tulipwood, Kingwood and Fruitwood Marquetry Table à Écrire**  
**Charles Topino, Paris, 1770s**

Estate / Collection: Property of a Fifth Avenue Philanthropist

The frame inlaid with flowers and objects, the rectangular superstructure with three quarter gallery above six small drawers, over a frieze drawer fitted with a leather writing surface, raised on cabriole legs with a shaped shelf stretcher, stamped *Topino*. Height 34 1/2 inches (87.5 cm), width 24 inches (61 cm), depth 15 3/4 inches (38.5 cm). Provenance: Jacques Perrin, Paris, 1999

**\$20,000-30,000**



78

**Assembled Minton Porcelain Flower-Encrusted Three-Piece Vase Garniture**  
**Circa 1840, the pair with gilt pattern no. 1306**

Estate / Collection: Property of a Fifth Avenue Philanthropist

The central vase and cover surmounted by a bouquet including a large tulip finial, the inverted pear-shape body flanked by upright scroll handles enriched in gilt, on a rocaille-molded foot; the tear-drop shape vases, applied overall with a large pansy, peonies, primroses, narcissus and other flowers, on a similar rocaille molded foot. Height of tallest approximately 10 1/2 inches (26.7 cm).

For a vase of the same form as the taller example, see The Victoria & Albert Museum, London, object no. C.20&A-1975.

**\$600-800**



79

**Pair of Sevres Style Porcelain 'Jeweled' Pink and Green Ground Vases and Covers**  
**Late 19th century**

Estate / Collection: Property of a Fifth Avenue Philanthropist

With spurious blue interlaced L's marks; of shield shape, each waisted neck flanked by gilt enriched anthemion leaves, one painted with a musician playing a guitar for a performing monkey and his handler, the other with a musician playing a hurdy-gurdy for a young boy and his dancing ferret, within a 'ruby', 'emerald', 'turquoise' and 'pearl' beaded surround, the obverse with a bouquet, on a conforming socle and canted square base. Height 11 inches (27.9 cm).

Provenance:

Dr, W.A. Criswell Collection, Christie's, New York, 9 April 2008, lot 352.

**\$800-1,200**

# DOYLE

Property of a Fifth Avenue Philanthropist Nov 7, 2024 - Nov 8, 2024



80

## Three Continental Enamel Jardinieres

Estate / Collection: Property of a Fifth Avenue Philanthropist

Each reserved with figures in a landscape and with pierced lattice border, comprising one oval, *height 3 1/2 inches (9 cm), length 10 inches (26 cm)*; and pair of circular, *height 4 inches (10 cm), diameter 7 3/4 inches (19.5 cm)*.

**\$500-700**



81

## Set of Four Louis XVI Style Painted Wood Fauteuils

Estate / Collection: Property of a Fifth Avenue Philanthropist

Each oval back with a tied husk border, above padded arms with acanthus and guilloche carved frame, with serpentine seat, raised on fluted turned legs. *Height of back 37 1/2 inches (95 cm), height of seat 16 inches (41 cm), width 26 1/4 inches (66.5 cm), depth 26 inches (66 cm)*.

**\$1,000-2,000**



82

## Louis XVI Style Porcelain Inset Mahogany Adjustable Stand

Estate / Collection: Property of a Fifth Avenue Philanthropist

*Height closed 29 1/2 inches (75 cm), diameter of top 10 1/2 inches (27 cm), diameter of base 19 inches (48.5 cm)*.

The Sevres Style Porcelain Blue *Pointillé* Ground Circular Plaque (*Plaque Ronde*), 19th century, probably Minton or Coalport painted in the manner of Louis-Denis Armand (1723-1796), with paired birds perched in a tree and strutting in a landscape vignette. For an exhibition and study of Armand's work, see Mia Jackson, *'Flights of Fancy: Birds at Waddesdon, a Rothschild House & Garden'*, 22 May – 27 Oct 2024, Alysbury, UK. The display includes the Razumovsky Dessert Service and ten vases by Armand, as well as over thirty comparison drawings from private collections, including those rediscovered and conserved by Bernard Dragesco & Didier Aaron, Paris.

**\$400-600**



83

## Pair of Louis XV Giltwood Small Upholstered Tabourets Mid 18th century

Estate / Collection: Property of a Fifth Avenue Philanthropist

Each rectangular seat with nailhead trim, raised on cabriole legs with flowers to knees. *Height 16 1/2 inches (42 cm), width 16 inches (40 cm), depth 13 inches (33 cm)*.

Provenance: Jacques Perrin, Paris, 1990s

**\$3,000-4,000**

# DOYLE

Property of a Fifth Avenue Philanthropist Nov 7, 2024 - Nov 8, 2024



84

**Louis XVI Marquetry Secrétaire en Encoignure**  
**Last quarter 18th century**

Estate / Collection: Property of a Fifth Avenue Philanthropist

The shaped marble top above a frieze drawer over a fall front inlaid with a basket of flowers opening to shelves, over a door inlaid with an urn of flowers opening to shelves, raised on block feet, stamped *ME Fleury*. *Height 46 inches (117 cm), width 25 1/4 inches (64 cm), depth 15 1/2 inches (39 cm).*

**\$3,000-4,000**



85

**Continental Enamel Singing Bird Box**  
**Probably Swiss, 20th century**

Estate / Collection: Property of a Fifth Avenue Philanthropist

Rectangular, the hinged cover with a figural scene, the sides with landscapes. *Height 2 1/4 inches (5.5 cm), width 4 inches (10 cm).*

**\$800-1,200**



86

**Four Continental Enamel Dresser Objects**  
**18th/19th Century**

Estate / Collection: Property of a Fifth Avenue Philanthropist

Each with floral reserves on a light blue ground, comprising an inkstand, *length 4 inches (10 cm)*, necessaire, pin case and a patch box.

**\$500-700**



87

**Sevres Style Porcelain 'Jeweled' Turquoise Ground Quatrefoil Jewel Box and Cover**  
**Possibly Samson, late 19th century**

Estate / Collection: Property of a Fifth Avenue Philanthropist

With spurious interlaced Ls enclosing an N; the cover painted with an amorous couple with attendant before a chateau and fountain within an enameled 'ruby' and white 'pearl' beaded surround, the side with similar four 'jeweled' rosettes, the interior lined in silk. *Width 4 inches (10.1 cm).*

**\$300-500**

# DOYLE

Property of a Fifth Avenue Philanthropist Nov 7, 2024 - Nov 8, 2024



88

**Group of Eight English Porcelain Flower-Encrusted Toilet Table Objects  
Circa 1830-1840**

Estate / Collection: Property of a Fifth Avenue Philanthropist

Each profusely applied with flowers, including: a John Ridgway roccaille-molded inkstand and cover with tulip finial, flanked by two pen emplacements, iron-red printed crowned cartouche WT JR. & Co. mark; a Minton chamberstick, with tulip nozzle, impressed date cipher for 1882; two 'Coalbrookdale-type' graduated pear-shaped perfume bottles and covers; a flower-form inkwell and cover with handle, attributed to Rockingham; a similar patch-box and cover; a small dish, indistinct gilt pattern no. 1431; and a Spode globular scent-bottle and cover, the shoulder applied with two canaries, iron red script mark, pattern no. 4650. *Height of tallest perfume bottle 8 inches (20.3 cm).*

Provenance: The patch-box with D.M. & P. Manheim, New York (label).

**\$400-600**



89

**Three Continental Porcelain Metal-Mounted Animalier Snuff-Boxes and Covers  
19th century**

Estate / Collection: Property of a Fifth Avenue Philanthropist

One lion with blue crossed lines mark for Samson; each naturalistically modeled with a gilt metal collar and hinged cover including a parrot and two lions. *Height of the largest 2 1/2 inches (5 cm).*

**\$500-700**



90

**Two Chelsea / Charles Gouyn Style Porcelain Gilt-Metal Mounted Objet de Vertu  
19th Century**

Estate / Collection: Property of a Fifth Avenue Philanthropist

The first a scent-bottle modeled as a cluster of plums with leaves, the stopper as a dolphin fish, *length 3 1/2 inches (8.9 cm)*; the second a patch-box and cover modeled as Cupid tying a ribbon around a lamb's neck, inscribed, 'PAYSER', *height 2 inches (5.1 cm)*.

For the related 18th century Charles Gouyn examples, see The British Museum, nos. 1887,0307,II.163 and 1887,0307,II.149, the patch-box inscribed 'TOUJOUR INNOCEMENT HEUREUX'; the scent-bottle with leaf stopper.

**\$150-250**



# DOYLE

Property of a Fifth Avenue Philanthropist Nov 7, 2024 - Nov 8, 2024



91

## Group of Small Porcelain Table Articles

Estate / Collection: Property of a Fifth Avenue Philanthropist

Including three continental porcelain gilt-bronze mounted snuff-boxes and covers, 19th century. The first in the Vienna style, spurious blue beehive mark to the interior, of ozier-molded green-ground rectangular form, the cover painted in monochrome puce with a quatrefoil panel of a maritime view of merchants unloading cargo; the second of serpentine form, painted in monochrome puce, the cover, cover interior and the sides with equestrian vignettes; the third Samson in the Sevres style, blue crossed lines mark, painted with loose bouquets and scattered flowers within gilt dash and blue line bands. Together with a miniature Sevres style green-ground two-handled tureen and cover and two limoges burgundy-ground egg-cups. *Width of the mini tureen, 3 1/2 inches (8.9 cm).*

**\$300-500**



92

## Sevres Style Porcelain Pink and Green Ground Toilet Pot and Cover 19th Century

Estate / Collection: Property of a Fifth Avenue Philanthropist

After the Sèvres form 'pot à pommade', the shallow domed cover with a carnation finial flanked by cartouches of a perched bird, the large cylindrical jar centering paired birds in branches within a green surround edged by gilt scrollwork reserved on the pink ground, gilt dentil rims. *Height 5 inches (12.7 cm).*

**\$300-500**



93

## Pair of Louis XV Style Giltwood Tapestry Upholstered Fauteuils à la Reine

Estate / Collection: Property of a Fifth Avenue Philanthropist

Each with a foliate carved arched crest, above padded arms and a serpentine seat, the seat rail and cabriole legs carved with flowers. *Height of back 40 1/2 inches (103 cm), height of seat 16 inches (41 cm), width 27 inches (68.5 cm), depth 28 inches (71.5 cm).*

**\$1,200-2,000**



94

## Louis XVI Style Gilt Bronze Mounted Mahogany Stand

Estate / Collection: Property of a Fifth Avenue Philanthropist

The galleried square marble top above a slide and frieze drawer with foliate scroll mounts, raised on tapering square legs, the arched X-form stretcher with a foliate finial. *Height 34 inches (86.5 cm), 10 1/4 inches (27.5), square.*

**\$250-350**

# DOYLE

Property of a Fifth Avenue Philanthropist Nov 7, 2024 - Nov 8, 2024



95

**Pair of Louis XV Style Painted and Parcel Gilt Tabourets**

Estate / Collection: Property of a Fifth Avenue Philanthropist

Each circular seat above a foliate scroll frieze, raised on cabriole legs. *Height 17 inches (43 cm), diameter 16 inches (41 cm).*

**\$500-700**



96

**Louis XVI Giltwood Bergère à la Reine  
Late 18th century**

Estate / Collection: Property of a Fifth Avenue Philanthropist

The frame with repeating leaf tip and beaded border, the arched crest above padded arms with foliate hand holds, above a serpentine seat, raised on stop fluted legs. *Height of back 36 inches (92 cm), height of seat 17 inches (44 cm), width 26 3/4 inches (68 cm), depth 25 3/4 inches (68 cm).*

**\$2,000-3,000**



97

**Pair of Louis XV Gilt Bronze Candlestick Lamps**

Estate / Collection: Property of a Fifth Avenue Philanthropist

*Height 12 inches (30 cm), diameter of base 6 1/2 inches (16.5 cm).*

**\$700-1,000**

# DOYLE

Property of a Fifth Avenue Philanthropist Nov 7, 2024 - Nov 8, 2024



98

**Mennecy Porcelain Silver-Gilt Mounted Ozier-Molded Snuff-Box and Cover and a Mennecy Etui**

**Circa 1750-60, the box with a décharge mark for Paris**

Estate / Collection: Property of a Fifth Avenue Philanthropist

The first of miniature commode form, the cover and sides painted with scattered flowers, the front with faux drawers edged in puce, scattered roses and sprigs to the interior, *width 3 inches (7.6 cm)*; the second of cylindrical form molded with basketweave and wavy lines, painted with flowers, each end with a floral wreath, *length 4 1/2 inches (11.4 cm)*.

For a related Mennecy double-snuff box, see the Metropolitan Museum of Art, accession no. 24.214.18. For a slightly variantly molded example at auction, see the Collezione Procida Mirabelli di Laurosee, Bonhams, London, 7 July 2010, lot 96.

**\$500-700**



99

**Two Meissen Style Porcelain Gilt-Metal Mounted Masquerade Lady's Face Bonbonnières**

**Together with a Smaller Patch-Box and a Related Enamel Example**

Estate / Collection: Property of a Fifth Avenue Philanthropist

The bonbonnières 19th century, possibly Samson, the patch-boxes possibly earlier; each modeled in relief with sparkling gem-paste eyes, wearing a black mask, the larger two with coiffed hair and gilt enriched pink tiara, all with hinged mounts and pendant suspension loops. *Height of largest 2 3/4 inches (7 cm)*.

For a similar patch-box see Troovy's, West Sussex, UK, 12 August 2015, lot 855. Also compare a Meissen porcelain gold-mounted example found in the Metropolitan Museum of Art collection, no. 64.101.173.

**\$1,500-2,500**



100

**Meissen Porcelain Gilt-Bronze Mounted Oval Snuff-Box and Cover**  
**19th Century**

Estate / Collection: Property of a Fifth Avenue Philanthropist

Of bombe form, painted with scattered flowers and insects, the base with a molded concave double ovolo. *Width 3 inches (7.6 cm)*.

**\$400-600**

# DOYLE

Property of a Fifth Avenue Philanthropist Nov 7, 2024 - Nov 8, 2024



101

**Two Samson Porcelain Gilt-Metal Mounted Bolognese Hound Head Snuff-Boxes and Covers**

**19th Century**

Estate / Collection: Property of a Fifth Avenue Philanthropist

Each, truncated at the collar, the dog's face naturalistically modeled and highlighted with brown fur markings, offered with a later metal presentation stand. *Height 2 1/2 inches (6.3 cm).*

**\$300-500**



102

**Four Paris Porcelain Gilt-Metal Mounted Snuff-Boxes and Covers**

**Late 19th century**

Estate / Collection: Property of a Fifth Avenue Philanthropist

Two with blue EC and crossed swords marks, two with blue crowned BB monogram marks. Comprising a Marx Eugene Clauss double snuff-box, of butterfly form, each cover painted with putti with goats in a landscape within a gilt cartouche; a Marx Eugene Clauss snuff-box painted with a bagpiper and companion within a gilt cartouche, the side with four similar landscape views; a Bourdois and Boch snuff-box modeled as a pink floral rocaille-molded sedan chair; and a Bourdois and Bloch snuff-box, signed indistinctly Led, the cover painted in puce and green with Chinoiserie musicians within a trellis pavilion surround, the side with a large flower filled vase, *length of the largest 6 inches (15.2 cm).*

**\$500-700**

# DOYLE

Property of a Fifth Avenue Philanthropist Nov 7, 2024 - Nov 8, 2024



103

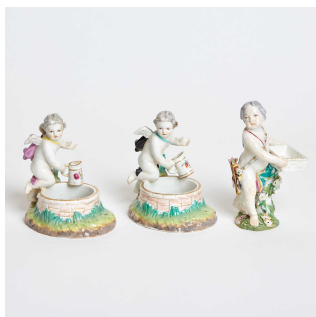
**Berlin Enameled Gilt-Copper Mounted Snuff-Box and Cover**  
**Circa 1735-40, attributed to the workshop of Pierre and Alexander Fromery**

Estate / Collection: Property of a Fifth Avenue Philanthropist  
Painted by Christian Friedrich Herold, signed on the underside Herold a Meßien  
The cover with a seated huntress attended by a gallant and companion, a flask, hunting horn, spear, rabbit and hound at her feet, before a ruin and a distant church, within a gilt *ombriert* shaded latticework cartouche, the sides and underside with similar cartouches enclosing figures in pastoral landscapes, the cover interior with Venus nursing Cupid, attended by a putto and two swans in the foreground, the box interior with a monochrome puce vignette of seated maiden before ruins, edged by gilt *Gitterwerk*. Height 1 3/4 inches (4.4 cm), width 3 1/8 inches (8 cm).

Originally a Berlin based 'hausmaler', Christian Friedrich Herold (Berlin ca. 1700 - Meissen 1779) is thought to have entered into an apprenticeship under Johann Gregorius Hoeroldt in the painting department of the Meissen porcelain manufactory circa 1725. Against the wishes of the Meissen directors, sources show that he continued to paint Berlin enameled boxes after this time and that several disciplinary measures were taken against him for these activities.

Following the death of his father Pierre, Alexander Fromery took over the 'Galanteriewarenhandel' (luxury wares dealership) in 1738 and the firm notably increased its cooperation with Herold. Reference the article by Diethard Lübke, 'Der Meißner Maler Christian Friedrich Herold - die charakteristischen Merkmale seiner künstlerischen Handschrift', *Keramos* 195/2007, p. 65-76. For a similarly signed example at auction see, The Prussian Sale, Lempertz, Berlin, 4 June 2019, lot 19.

**\$5,000-7,000**



104

**Chelsea Porcelain model of Cupid as a Flower Seller**  
**Together with Two Berlin (K.P.M.) Porcelain Putti Figures as Salts**

Estate / Collection: Property of a Fifth Avenue Philanthropist  
Chelsea example circa 1760; modeled standing clad in turquoise drape, a quiver of arrows slung by a strap at his hip, resting a rectangular *ozier*-molded basket on a tree-stump, the side and mound base applied with flowers and leaves. Height 4 7/8 inches (12.4 cm).

Berlin examples circa 1820-30, blue scepter mark, the other mark likely obscured by a collector label; each modeled kneeling holding a jug beside a masonry well on a grassy mound base, the interior painted with a bird. Height 4 1/4 inches (10.8 cm).

Provenance:

Mrs. George J. Baya, Coral Gables, Florida (the salts, labels).

For a gold anchor Chelsea flower seller, see Reeman Dansie, East Anglia, UK, 30 April 2024, lot 236.

**\$300-500**



# DOYLE

Property of a Fifth Avenue Philanthropist Nov 7, 2024 - Nov 8, 2024



105

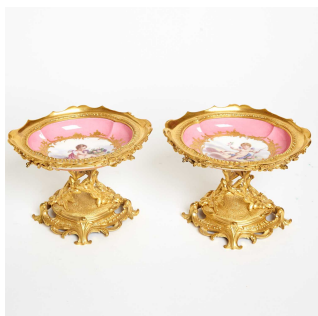
**Louis XVI Gilt Bronze Mounted Parquetry Table a Ecrire**  
Mathieu-Guillaume Cramer, Paris, last quarter 18th century

Estate / Collection: Property of a Fifth Avenue Philanthropist

The rectangular top with inlaid lattice, above a slide to front and drawer to each end, the frieze applied with flowers and scrolls, raised on tapering square legs inlaid with guilloche, stamped *Cramer*. Height 27 1/2 inches (70 cm), width 23 1/4 inches (59 cm), depth 15 1/2 inches (39 cm).

Provenance: Jacques Perrin, Paris, 1997

**\$20,000-30,000**



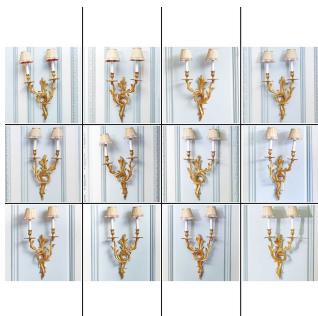
106

**Pair of Sevres Style Porcelain Pink-Ground Gilt-Bronze Mounted Tazzas**  
Late 19th century

Estate / Collection: Property of a Fifth Avenue Philanthropist

Each quatrefoil dish painted with a putto with flowers seated among clouds, the exterior banded with a pink ribbon suspending flower garlands, set in a floral garland mount above a rocaille-scroll molded foot. Height 5 1/4 inches (13.3 cm), width 7 1/2 inches (19 cm).

**\$400-600**



107

**Set of Twelve Louis XVI Style Gilt Bronze Two-Light Sconces**  
20th Century

Estate / Collection: Property of a Fifth Avenue Philanthropist

Each foliate back issuing staggered foliate scroll branches. Height 16 1/2 inches (42 cm), width 12 inches (30 cm).

**\$2,000-4,000**



108

**Four Chinese Blanc de Chine Porcelain Figures of Guanyin**  
20th Century and Earlier

Estate / Collection: Property of a Fifth Avenue Philanthropist

Depicting the robed goddess in various postures.

(Dimensions: Height of tallest 17 1/2 inches)

**\$800-1,200**

# DOYLE

Property of a Fifth Avenue Philanthropist Nov 7, 2024 - Nov 8, 2024



109

**Exceptionally Large Chinese Blanc de Chine Figure of Guanyin  
1st Half 20th Century**

Estate / Collection: Property of a Fifth Avenue Philanthropist  
The crowned figure holding a bottle modeled atop a lotus base and dressed in flowing robes with beaded strands and ribbons.  
(Dimensions: Height 33 inches)

**\$2,000-3,000**



110

**Pair of Large Chinese Enameled Porcelain Jardinières  
20th Century**

Estate / Collection: Property of a Fifth Avenue Philanthropist  
With molded mask handles to rounded flower-decorated bodies and flat everted rims. *Diameter 23 inches.*

**\$1,500-2,000**



111

**Chinese Dehua Porcelain Figure of Guanyin  
Qing Dynasty**

Estate / Collection: Property of a Fifth Avenue Philanthropist  
The figure depicted seated upon a rocky base beside a scroll.  
(Dimensions: Height 6 1/4 inches)

**\$800-1,200**



112

**Chinese Dehua Porcelain Figure of Guanyin  
Qing Dynasty**

Estate / Collection: Property of a Fifth Avenue Philanthropist  
Depicting the seated goddess in loose robes and holding a scroll.  
(Dimensions: Height 9 3/4 inches)

**\$800-1,200**

# DOYLE

Property of a Fifth Avenue Philanthropist Nov 7, 2024 - Nov 8, 2024



113

**Chinese Dehua Porcelain Figure of Guanyin**  
**19th-20th century**

Estate / Collection: Property of a Fifth Avenue Philanthropist  
The standing figure atop large prawn depicted with ruyi scepter.  
(Dimensions: Height 8 1/2 inches)

**\$700-900**

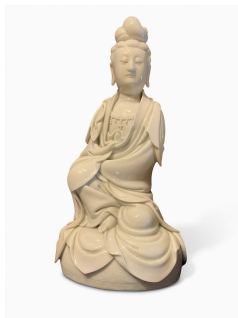


114

**Indian Embellished White Jade Dagger Handle**  
**Mughal**

Estate / Collection: Property of a Fifth Avenue Philanthropist  
The floral carved handle of typical curved form and inset with hardstone and gilt metal embellishments; mounted with later brass letter opener blade.  
(Dimensions: Length of handle 5 1/4 inches)

**\$3,000-5,000**



115

**Chinese Dehua Porcelain Figure of Guanyin**

Estate / Collection: Property of a Fifth Avenue Philanthropist  
Shown seated on a circular base, with the head slightly inclined, and hands hidden within the folds of the robe.  
(Dimensions: Height 10 1/4 inches)

**\$1,500-2,000**



116

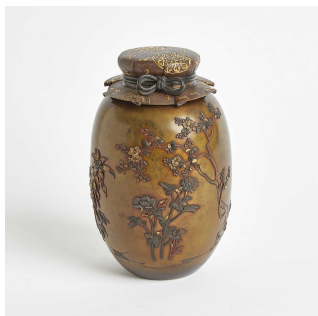
**Pair of Japanese Porcelain Vases**  
**1st Half of 20th Century**

Estate / Collection: Property of a Fifth Avenue Philanthropist  
The scalloped-rimmed vases with molded handles decorated to show birds, insects, and blossoms.  
(Dimensions: Height 14 3/4 inches)

**\$200-300**

# DOYLE

Property of a Fifth Avenue Philanthropist Nov 7, 2024 - Nov 8, 2024



117

**Japanese Mixed Metal Vase and Cover**  
**Marked Shobi, Meiji Period**

Estate / Collection: Property of a Fifth Avenue Philanthropist  
The ovoid body decorated with raised, mixed metal flowers and blossoming trees; the cover artfully cast and decorated to resemble a cloth covering tied with knotted cord. *Height 7 1/2 inches (19 cm).*

**\$3,000-5,000**



118

**Pair of Louis XV Style Gilt Bronze Candlestick Lamps**

Estate / Collection: Property of a Fifth Avenue Philanthropist  
Each knopped stem with angelic masks, on shaped circular bases with rocaille border. *Height 7 1/2 inches (19 cm).*

**\$400-600**



119

**Louis XV Provincial Border Glass Mirror**  
**18th Century**

Estate / Collection: Property of a Fifth Avenue Philanthropist  
The arched pierced crest with agrarian implements above a rectangular frame. *Height 42 inches (106.5 cm), width 26 1/2 inches (67.5 cm).*

**\$800-1,200**



120

**Regence Gilt Bronze Mounted Kingwood Parquetry Commode**  
**Etienne Doirat, Paris, first half 18th century**

Estate / Collection: Property of a Fifth Avenue Philanthropist  
The marble top above two short and two long drawers, the hardware with floral cornucopia, over an apron with a mask and foliate scrolls, raised on bracket feet, stamped *E. Doirat*. *Height 33 1/4 inches (84.5 cm), width 47 inches (119.5 cm), depth 23 1/2 inches (59.5 cm).*

Provenance: Jacques Perrin, Paris, 1998

**\$6,000-9,000**

# DOYLE

Property of a Fifth Avenue Philanthropist Nov 7, 2024 - Nov 8, 2024



121

**Louis XVI Gilt Bronze Clock**  
**Attributed to Gouthiere, late 18th century**

Estate / Collection: Property of a Fifth Avenue Philanthropist  
With swag draped urn-form finial, above the enamel dial flanked by rams masks, over scrolls centering a plaque with putti, the bowed rectangular base with foliate scroll panels, raised on button feet. *Height 26 inches (66 cm), width 18 1/2 inches (47 cm).*

**\$8,000-12,000**



122

**Pair of Louis XV Gilt Bronze Candlestick Lamps**

Estate / Collection: Property of a Fifth Avenue Philanthropist  
*Height 11 1/2 inches (29 cm), diameter of base 6 1/4 inches (16 cm).*

**\$1,000-2,000**



123

**Samson Porcelain Gilt-Bronze Mounted Model of a Guinea Fowl**  
**Late 19th century, blue crossed lines mark**

Estate / Collection: Property of a Fifth Avenue Philanthropist  
After the Meissen model of circa 1735 designed by J.J. Kändler for the Dresden, Japanese Palace, naturalistically modeled standing on a rocky mound base amongst mushrooms and green leaves, with white-speckled black plumage, long curved purple neck, wide eyes, red comb and wattle, set on a rocaille gilt-bronze base. *Height 19 1/2 inches (49.5 cm).*

For a closely related 18th century Meissen example, see The Sir Gawaine and Lady Baillie Collection, Sotheby's, London, 1 May 2013, lot 195.

**\$500-1,200**



124

**Group of Louis XVI Style Gilt Metal Frames**  
**20th Century**

Estate / Collection: Property of a Fifth Avenue Philanthropist  
Various shapes and sizes, many with tied ribbon crest. Approximately eight. *Height of largest 10 1/4 inches (26 cm), width 7 1/2 inches (19 cm); height of smallest 3 1/2 inches (9 cm), width 2 1/2 inches (6.5 cm).*

**\$400-600**



# DOYLE

Property of a Fifth Avenue Philanthropist Nov 7, 2024 - Nov 8, 2024



125

**Seven Meissen Porcelain Figures and Figure Groups of Putti**  
**Late 19th century, blue crossed swords marks**

Estate / Collection: Property of a Fifth Avenue Philanthropist  
Model numbers O.186, C.100, M.104, L.164, C.61, C.62 and P.114, various Press Nummern and painted numerals. Comprising a Cupid capturing flying hearts; a Cupid emblematic of the element Earth, a Cupid bound; paired putti with a basket of fruit and flowers and a floral wreath, a Cupid woodworker at a lathe, a Cupid sharpening arrows at a whetstone and paired putti as carpenters, the last, designed by August Ringer (1837-1918). *Height of tallest 4 3/4 inches (12 cm).*

**\$600-800**



126

**Four Small Ceramic Figures**

Estate / Collection: Property of a Fifth Avenue Philanthropist  
Comprising a Vienna porcelain figure of a Moor, *circa 1827-50*, impressed Bindenschild mark, modeled as a young black man standing, wearing a blue and orange turban, pink jacket and green britches, holding a replacement metal epee sword, on a gilt-lined square tile base, *height 4 1/4 inches (10.8 cm)*; a Staffordshire Porcelain model of a seated pink-ground greyhound, 19th century, on an oval molded cushion base; A Continental Porcelain Figure Emblematic of Asia, 19th century, probably Samson, spurious H.39... mark, loosely modeled after the Strasbourg example, *circa 1751-54* by Johann Wilhelm Lanz, depicted standing before a recumbent camel; and a Staffordshire Porcelaneous Model of a Lion, 19th century, depicted with raised paw, his mane and the oval base applied with frit chippings above an incised double wavy line and concave oval base.

**\$300-500**



127

**Five Meissen Porcelain Figures of Gardeners and Musicians**  
**Late 19th/20th century, blue crossed swords marks, various incised model numbers, Pressnummern and painter's marks**

Estate / Collection: Property of a Fifth Avenue Philanthropist  
Comprising a seated vintager, a standing musician playing a recorder, a standing gardener holding a basket, another holding flowers in her apron, and a standing musician playing the bagpipes, all on rocaille-molded bases. *Height of tallest 5 1/2 inches (14 cm).*

**\$500-700**

# DOYLE

Property of a Fifth Avenue Philanthropist Nov 7, 2024 - Nov 8, 2024



128

**Meissen Porcelain Figure of a Boy with Crossbow**  
**Late 19th/20th century**

Estate / Collection: Property of a Fifth Avenue Philanthropist  
Blue crossed swords mark, incised model number J33, impressed 102, and painter's 85., after a model by M.V. Acier of 1755. Depicted standing beside a column taking aim, a caliper at his feet, on a circular gilt-enriched key-pattern base. *Height 6 inches (15.2 cm).*

**\$200-300**



129

**Pair of Meissen Porcelain Gilt-Bronze and Tole Branch Mounted Models of Cows as Candlesticks**  
**Mid-18th century, the bull with blue crossed sword's mark at the back**

Estate / Collection: Property of a Fifth Avenue Philanthropist  
Each cow naturalistically modeled recumbent, the grassy mound base applied with flowers and foliage, beneath a flower-form nozzle and bobèche and before a bocage of tôle branches applied with porcelain flowerheads, set on a rocaille-molded scroll foot. *Height of larger 11 inches (27.9 cm), width 10 inches (24.5 cm).*

For a similar recumbent cow model, see Bonhams, London, 4 July 2024, lot 188.

**\$2,000-3,000**



130

**Pair of Meissen Porcelain Figural Gilt-Bronze Arcade and Tole Branch Chambersticks**  
**The porcelain figures 18th century**

Estate / Collection: Property of a Fifth Avenue Philanthropist  
Modeled as a gallant and companion, he in black hat, yellow jacket and purple britches, she in a mob cap, purple shawl and floral skirt, both holding a muff, set within an arched trellis applied with tole branches and porcelain flowerheads, raised on four bun feet. *Height 6 inches (15.2 cm).*

**\$700-900**

# DOYLE

Property of a Fifth Avenue Philanthropist Nov 7, 2024 - Nov 8, 2024

131



**Pair of Coalport Porcelain Green-Ground Flower-Encrusted Two-Handled Vases as Table Lamps**

**Circa 1825**

Estate / Collection: Property of a Fifth Avenue Philanthropist

In the 'Coalbrookdale' style, each of flaring form, applied and painted with flowers including anemones, daisies and carnations, flanked by S-scroll handles, above a bulbous lower body, on a gilt enriched roccaille-molded foot, offered with later pink and green tasseled and fringed shades. *Height of vase 6 1/2 inches (16.5 cm).*

For a marked example of this form see, Michael Messenger, 'Coalport 1795-1926' (1995), pl. 171.

**\$400-600**

132



**Pair of Louis XV Style Gilt Bronze Chenets**

**19th Century**

Estate / Collection: Property of a Fifth Avenue Philanthropist

Each with a figure of a monkey in 18th century dress on a foliate scroll base. *Height 11 3/4 inches (31 cm), length 14 1/4 inches (36 cm).*

**\$2,000-3,000**

133



**Pair of Chinese White Glazed Porcelain Foo Lions**

**20th Century**

Estate / Collection: Property of a Fifth Avenue Philanthropist

Each seated on a plinth base. *Height 12 inches (31 cm).*

**\$100-200**

134



**Three Chinese Blanc de Chine Figures of Guanyin**

**20th Century**

Estate / Collection: Property of a Fifth Avenue Philanthropist

Comprising three seated figures of the bodhisattvas, one of 'song zi' form with child. *Height of largest 13 inches.*

**\$600-800**

# DOYLE

Property of a Fifth Avenue Philanthropist Nov 7, 2024 - Nov 8, 2024



135

**Pair of Gilt-Bronze Mounted Chinese Porcelain Two-Handled Urns**  
**19th Century**

Estate / Collection: Property of a Fifth Avenue Philanthropist  
The classically-inspired mounts embellished with laurel swags, the porcelain decorated to show figural scenes. *Height 10 1/4 inches.*

**\$700-900**



136

**Large Group of Chinese Glazed Ceramic 'Offering' Fruits**  
**20th Century**

Estate / Collection: Property of a Fifth Avenue Philanthropist  
Comprising forty-two vividly decorated models of fruits and vegetables. *Height of largest 5 1/2 inches.*

**\$500-700**



137

**Six Yellow Glazed Ceramic Vases**  
**20th Century**

Estate / Collection: Property of a Fifth Avenue Philanthropist  
Of various bottle forms. *Height of largest 12 1/4 inches.*

**\$200-300**



138

**Pale Blue Brocade Upholstered Loose Cushion Settee**  
**Late 20th century**

Estate / Collection: Property of a Fifth Avenue Philanthropist  
With a swagged and tassle fringe. *Height of back 33 inches (84 cm), height of seat 18 inches (46 cm), length 7 feet (214 cm), depth 37 1/2 inches (95.5 cm).*

**\$1,000-1,500**

# DOYLE

Property of a Fifth Avenue Philanthropist Nov 7, 2024 - Nov 8, 2024



139

**Geoffrey Bradfield Acrylic Low Table**  
**Late 20th century**

Estate / Collection: Property of a Fifth Avenue Philanthropist  
The rectangular top raised on shaped square legs. *Height 17 1/2 inches (44.5 cm), width 47 1/2 inches (120.5 cm), depth 28 inches (71 cm).*

**\$700-1,000**



140

**Louis XVI Style Gilt Bronze Candlestick Lamp with Dolphin Base**

Estate / Collection: Property of a Fifth Avenue Philanthropist  
The stem with urn draped with floral swags raised on a triangular base with three intertwined dolphins. *Height 9 1/4 (23.5 cm).*

**\$500-700**



141

**Pair of Louis XV Style Gilt Bronze Small Candlestick Lamps**

Estate / Collection: Property of a Fifth Avenue Philanthropist  
Each knopped stem on a shaped triangular base with scroll corners. *Height 6 3/4 inches (17 cm).*

**\$400-600**



142

**Louis XVI Gilt Bronze Mounted Tulipwood Parquetry Table à Écrire**  
**Roger Vandercruse LaCroix, Paris, mid 18th century**

Estate / Collection: Property of a Fifth Avenue Philanthropist  
The rectangular top above a frieze drawer fitted with leather inset writing surface, all inlaid with trellis, raised on tapering square legs inlaid with bell flowers, stamped *R.V.L.C.*. *Height 27 1/2 inches (70 cm), width 25 1/2 inches (65 cm), depth 15 3/4 inches (40 cm).*

Provenance: Jacques Perrin, Paris, 1999

**\$7,000-10,000**



# DOYLE

Property of a Fifth Avenue Philanthropist Nov 7, 2024 - Nov 8, 2024



143

## Pair of Marble Part Fluted Pedestals

Estate / Collection: Property of a Fifth Avenue Philanthropist

Each tapering square with a molded shelf and plinth base. *Height 51 1/2 inches (130 cm), width 16 inches (41 cm), depth 14 inches (36 cm).*

**\$5,000-7,000**



144

## Regence Giltwood Border Glass Mirror

Estate / Collection: Property of a Fifth Avenue Philanthropist

The shaped arched crest with scrolls and phoenixes centering a feathered plume, the rectangular plate with floral and foliate scroll corners. *Height 60 inches (152.5 cm), width 34 inches (86.5 cm).*

**\$4,000-6,000**



145

## Louis XVI Carved Giltwood Upholstered Canapé

Jean-Jacques Pothier, Paris, 1770s

Estate / Collection: Property of a Fifth Avenue Philanthropist

The arched crest with leaf tip border, the arms with foliage and guilloche, the frame with guilloche, raised on turned fluted legs, stamped *Pothier*. *Height of back 39 1/2 inches (100 cm), height of seat 20 inches (51 cm), width 62 1/2 inches (159 cm), depth 28 inches (71 cm).*

Provenance: Chinese Porcelain Company, New York, 1990s

Private Collection

**\$15,000-25,000**



146

## Louis XVI Mahogany Bureau à Cylindre

Attributed to Simon Oeben, Paris, 1780s

Estate / Collection: Property of a Fifth Avenue Philanthropist

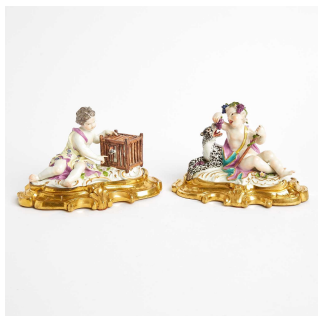
The rectangular three quarter galleried top above two drawers over a roll top with sliding writing surface and a fitted interior, above five small drawers flanked by guilloche mounts, raised on fluted tapering square legs. *Height 49 1/2 inches (126 cm), width 50 1/2 inches (128 cm), depth 29 inches (74 cm).*

Provenance: The Chinese Porcelain Company, New York, 1990s

**\$20,000-30,000**

# DOYLE

Property of a Fifth Avenue Philanthropist Nov 7, 2024 - Nov 8, 2024



147

**Two Meissen Porcelain Gilt-Bronze Mounted Figures of Putti Emblematic of Taste and Touch**

**Circa 1760, modeled by J.J. Kändler**

Estate / Collection: Property of a Fifth Avenue Philanthropist

The first modeled leaning on a wooden bird cage teasing a cockerel with an extended finger; the second as the infant Bacchus seated holding a thyrsus staff and offering grapes to a recumbent leopard, each on a rocaille-scroll molded base, set in a conforming gilt-bronze mount. *Height 4 1/2 inches (11.4 cm), width 7 inches (17.8 cm).* Provenance: Jacques Perrin, Paris, 1999

**\$1,500-2,500**



148

**Samson Porcelain Pink-Ground Gilt-Bronze Mounted Inkstand**

**Late 19th century, interlaced S's enclosing a Y mark**

Estate / Collection: Property of a Fifth Avenue Philanthropist

In the Sevres style, set with three inkwells and covers, the cartouche shaped stand painted with paired birds and panels of pendant garlands, raised on rocaille-scroll feet. *Width 14 1/2 inches (36.8 cm).*

**\$400-600**



149

**Mintons Porcelain Pink and Green Ground Desk Set**

**Dated 1884, impressed date mark for 1878**

Estate / Collection: Property of a Fifth Avenue Philanthropist

With gilt crown globe marks and retailer's banner for John Mortlock, Oxford Street and Orchard Street, London, model no. 2240, the small objects with gilt mark above 1884. Each in the Sevres style, painted with birds within an oval gilt enriched green trellis surround, the borders with garlands suspending bell flowers and beaded gilt chain including: two ink-pots and covers, a small vase 'oreilles' and a two-handled tray, 'plateau Duplessis'. *Width of tray 13 inches (33 cm).*

For a Mintons porcelain pink-ground tray of the same form, see The Potteries Auction, Newcastle under Lyme, UK, 8 March 2024, lot 872.

For a similar set painted with fruit, see the present sale and Masterpieces of Minton, Selected Items from the Minton Museum Collection, Bonhams, London, 23 July 2002, lot 95.

**\$800-1,200**

# DOYLE

Property of a Fifth Avenue Philanthropist Nov 7, 2024 - Nov 8, 2024



150

## Louis XV Style Porcelain Mounted Basket Form Chandelier

Estate / Collection: Property of a Fifth Avenue Philanthropist

The flared cylindrical basket issuing scrolling branches with trailing vines. *Height 26 1/2 inches (67.2 cm), diameter 17 1/4 inches (44 cm).*

**\$700-1,000**



151

## Pair of Louis XVI Marble Top Giltwood Wall Mounted Corner Consoles Last quarter 18th century

Estate / Collection: Property of a Fifth Avenue Philanthropist

Each shaped top above an openwork foliate scroll frieze with tied floral swag, raised on shaped legs, the stretcher with a flaming urn and floral swags, raised on paw feet. *Height 34 inches (87 cm), width 29 inches (74 cm), depth 18 1/2 inches (47 cm).*

**\$5,000-7,000**



152

## Set of Twelve Louis XVI Brocade Upholstered Painted Wood Dining Chairs Francois Noel Geny, 1780s

Estate / Collection: Property of a Fifth Avenue Philanthropist

Each with an oval back, over a loose cushion bowed seat, raised on turned fluted legs with rosettes, stamped F. Geny. *Height of back 36 inches (91 cm), height of seat 20 1/4 inches (51.5 cm), width 20 inches (51 cm), depth 18 inches (45.5 cm).*

Provenance: Sotheby's New York, September 24 and 25, 2012, *Property from the Estate of Brooke Astor*, lot 151.

J. Cordonnier & Cie., Paris, 1960

**\$8,000-12,000**



153

## Louis XVI Style Gilt Bronze Mounted Mahogany Drop Leaf Extension Dining Table

Estate / Collection: Property of a Fifth Avenue Philanthropist

The oval top raised on tapering turned legs ending in casters. *Height 28 inches (71 cm), length 7 feet 2 inches (218 cm), depth 50 1/4 inches (127 cm).*

**\$3,000-4,000**

# DOYLE

Property of a Fifth Avenue Philanthropist Nov 7, 2024 - Nov 8, 2024



154

**Large Samson Porcelain Chinoiserie Figure Centerpiece**  
**Circa 1870**

Estate / Collection: Property of a Fifth Avenue Philanthropist

Modeled in the round with two Chinese boys in brightly colored robes struggling with a large flower-filled basket, a third kneeling figure on the obverse enjoying a slice of melon, on a rocky base, offered with a later gilt wood base. *Height 15 inches (38.1 cm).*

**\$300-500**



155

**Pair of Louis XV Gilt Bronze Candlestick Lamps**

Estate / Collection: Property of a Fifth Avenue Philanthropist

Each with a scroll and rocaille baluster-form stem, on a circular base. *Height 9 1/2 inches (24 cm), diameter of base 4 1/2 inches (11.5 cm).*

**\$1,000-2,000**



156

**Pair of Louis XVI Style Gilt Bronze Four-Light Candelabra**  
**19th Century**

Estate / Collection: Property of a Fifth Avenue Philanthropist

Each stem with three female busts and issuing three scrolling branches centering a raised light, all on a part fluted circular base with tied rosette border. *Height overall 20 1/4 inches (51.5 cm), diameter 11 1/4 inches (28.5 cm).*

**\$3,000-5,000**



157

**Monumental Pair of Japanese-subject Bronze Figural Sculptures**  
**20th Century**

Estate / Collection: Property of a Fifth Avenue Philanthropist

Depicting standing figures of a noble in kimono holding a fan and bearing the weapons of a samurai and a woman in formal attire. *Height 59 inches.*

**\$10,000-15,000**

# DOYLE

Property of a Fifth Avenue Philanthropist Nov 7, 2024 - Nov 8, 2024



158

**Set of Six Louis XVI Style Gilt Metal Floriform Three-Light Sconces**

Estate / Collection: Property of a Fifth Avenue Philanthropist

Each with a tied flaming torch back issuing three floral branch-form candlearms.

*Height 25 1/4 inches (64 cm), width 15 inches (38 cm), depth 10 inches (26 cm).*

**\$2,000-3,000**



159

**Louis XVI Marble Top Giltwood Wall Mounted Console**  
**Last quarter 18th century**

Estate / Collection: Property of a Fifth Avenue Philanthropist

The shaped rectangular top above an openwork frieze with ribbon tied floral swags, raised on legs carved with guilloche and foliate scrolls. *Height 32 inches (82 cm), width 53 inches (135 cm), depth 25 1/2 inches (62 cm).*

Provenance: Jacques Perrin, Paris, 1990s

**\$10,000-15,000**



160

**Five Chinese Rose Mandarin Porcelain Articles**  
**Late Qing Dynasty**

Estate / Collection: Property of a Fifth Avenue Philanthropist

Comprising a pair of covered baluster vases, a bowl, a bowl on gilt metal stand, and a petal-rimmed dish. *Height of vases 12 1/4 inches.*

**\$800-1,200**



161

**Six Chinese Rose Medallion Porcelain Articles**  
**Late Qing Dynasty**

Estate / Collection: Property of a Fifth Avenue Philanthropist

Comprising a gu form vase, a basin, two cream jugs and two saucer dishes. *Height of largest 15 inches.*

**\$1,500-2,000**



# DOYLE

Property of a Fifth Avenue Philanthropist Nov 7, 2024 - Nov 8, 2024



162

**Pair of Chinese Rose Mandarin Porcelain Vases**  
**Late Qing Dynasty**

Estate / Collection: Property of a Fifth Avenue Philanthropist  
Of baluster-form with molded and gilt decorated chilong and fu lions to shoulder and neck. *Height 14 inches.*

**\$700-900**



163

**Chinese Enameled Porcelain Jar**

Estate / Collection: Property of a Fifth Avenue Philanthropist  
Mounted as a lamp. *Height of jar 8 inches (20 cm), height with mounts 13 inches (33 cm).*

**\$600-800**



164

**Chinese Export Style Famille Rose Two-Handled Cache-Pot**  
**19th century, possibly Samson**

Estate / Collection: Property of a Fifth Avenue Philanthropist  
Enameled with a peacock among peonies and other flowers, flanked by gilt enriched handles, the foot with spearheads. *Height 8 inches.*

**\$300-500**



165

**Pair of Chinese Porcelain Vases with Gilt Metal Mounts**  
**20th Century**

Estate / Collection: Property of a Fifth Avenue Philanthropist  
The lobed vases with molded dragon handles and with a lavender glaze. *Height 11 inches.*

**\$300-500**

# DOYLE

Property of a Fifth Avenue Philanthropist Nov 7, 2024 - Nov 8, 2024



166

**Chinese Export Porcelain Teapot**  
**18th Century**

Estate / Collection: Property of a Fifth Avenue Philanthropist  
The globular body decorated in underglaze blue and famille rose enamels to show figural scenes within shaped panels; with later silver spout. *Height 8 inches.*

**\$400-600**



167

**Chinese Enamelled Porcelain Lotus-Form Water Dropper**  
**Qianlong Mark, Late-Qing - Republic Period**

Estate / Collection: Property of a Fifth Avenue Philanthropist  
Naturalistically shaped and enameled to resemble a pink lotus blossom with a green stem-like spout. *Length 7 1/2 inches.*

**\$1,000-1,500**



168

**Chinese Gilt-Mounted Rose Mandarin Two-Tiered Tazza**  
**Late Qing Dynasty**

Estate / Collection: Property of a Fifth Avenue Philanthropist  
Together with a Pair of Gilt-Mounted Rose Mandarin Vases and a Gilt-Mounted Footed Dish with Swing Handle. *Height of tazza 10 inches.*

**\$1,000-1,500**



169

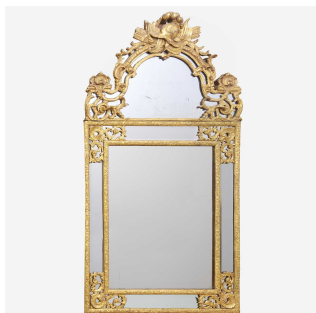
**Chinese Export Rose Mandarin Porcelain Two-Handled Urn and Cover**  
**19th century**

Estate / Collection: Property of a Fifth Avenue Philanthropist  
Of European form with tapering body and socle base; the cover surmounted by figural knop. *Height 17 1/4 inches.*

**\$2,000-4,000**

# DOYLE

Property of a Fifth Avenue Philanthropist Nov 7, 2024 - Nov 8, 2024



170

**Regence Giltwood Border Glass Mirror**  
**18th Century**

Estate / Collection: Property of a Fifth Avenue Philanthropist

The arched mirror crest with martial trophies and foliate scrolls, the rectangular plate with foliate scroll corners. *Height 60 inches (152.5 cm), width 32 inches (82.5 cm).*

**\$3,000-5,000**



171

**Chinese Export Enameled Porcelain Mug**  
**18th-19th century**

Estate / Collection: Property of a Fifth Avenue Philanthropist

Decorated with figural scene. *Height 4 1/2 inches.*

**\$500-700**



172

**Five Chinese Rose Medallion Porcelain Articles**  
**19th Century**

Estate / Collection: Property of a Fifth Avenue Philanthropist

Comprising a baluster-form vase, a covered square box, two sauceboats and an oval dish. *Height of vase 14 inches.*

**\$400-600**



173

**Group of Fourteen Chinese Export Porcelain Table Articles**  
**18th Century and later**

Estate / Collection: Property of a Fifth Avenue Philanthropist

Comprising six containers, four with metal mounts; two figures; six dishes; a bowl; **Together with a Japanese Dish.** *Height of largest 6 1/2 inches (16.5 cm).*

**\$500-700**

# DOYLE

Property of a Fifth Avenue Philanthropist Nov 7, 2024 - Nov 8, 2024



174

**Empire Style Gilt Metal and Glass Chandelier**  
**20th Century**

Estate / Collection: Property of a Fifth Avenue Philanthropist  
The crown frame hung with beaded chains above a drum-form body with six lights and hung with concentric rings of teardrop pendants. *Height 31 inches (79 cm), diameter 22 1/2 inches (57 cm).*

**\$700-1,000**



175

**Louis XVI Brocade Upholstered Painted and Giltwood Fauteuil en Cabriolet**  
**Last quarter 18th century**

Estate / Collection: Property of a Fifth Avenue Philanthropist  
The square back and frame carved with laurel, with padded arms and scrolling hand holds, over a bowed seat, raised on turned stop fluted legs. *Height of back 37 inches (94 cm), height of seat 16 inches (41 cm), width 26 inches (66 cm), depth 25 inches (64 cm).*

**\$800-1,200**



176

**Louis XVI Gilt Bronze Mounted Mahogany Bureau à Cylindre**  
**Last quarter 18th century**

Estate / Collection: Property of a Fifth Avenue Philanthropist  
The rectangular three quarter galleried marble top above a roll top opening to a fitted interior over nine small drawers surrounding a pair of doors, the ends with slides, all raised on tapering square legs ending in casters, stamped *F. Bury*. *Height 40 inches (102 cm), width 43 1/2 inches (110.5 cm), depth 21 inches (53.5 cm).*  
Provenance: Philippe Perrin, Paris, 1999

**\$5,000-10,000**



177

**English Porcelain Greyhound Inkstand**  
**Circa 1830-40**

Estate / Collection: Property of a Fifth Avenue Philanthropist  
After the Chelsea Derby model of 1760, the roccaille-molded stand raised on paw feet, painted with flowers and enriched in gilt and trimmed in pale-blue, including: a fitted oblong pen compartment and cover surmounted by a recumbent hound, a central baluster taperstick, and two cylindrical inkwells, the covers with carnation finials. *Width of stand 9 1/8 inches (23.2 cm).*

**\$200-400**

# DOYLE

Property of a Fifth Avenue Philanthropist Nov 7, 2024 - Nov 8, 2024



178

**English Porcelain Pale-Blue Ground Letter Holder**  
**Circa 1830**

Estate / Collection: Property of a Fifth Avenue Philanthropist

The fan-shaped pocket molded with two registers of rinceau scrolls incorporating either lyres or shells, the backplate crested with a sun mask, the front painted with a basket of spilling flowers, raised on gilt paw feet, the rectangular base edged in gilt. *Height 9 3/4 inches (24.7 cm), width 9 1/4 inches (23.5 cm).*

**\$400-600**



179

**Sevres Style Porcelain Cobalt-Blue Ground Reticulated Square Dish**  
**19th century, spurious blue interlaced L's enclosing an R**

Estate / Collection: Property of a Fifth Avenue Philanthropist

After the Sèvres form 'Plateau Carré à Jour', painted in *camaieu rose* with a Cupid releasing doves from a cage, within a garlanded heart-shaped gilt cartouche, the canted square rim pierced with gilt Vitruvian scrollwork enclosing bellflowers. *5 3/8 inches square (13.5 cm).*

**\$300-500**



180

**Pair of Sevres Style Porcelain Gilt-Bronze Mounted Two-Handled Vases and Covers**  
**Mid-19th century**

Estate / Collection: Property of a Fifth Avenue Philanthropist

Oviform, the flat covers with carnation finials, each painted with a central vignette of a putto seated in clouds among roses within chased gilt foliate trellis cartouche, flanked by upright reed loop handles, the obverse with birds perched in branches, on a conforming fluted socle and canted square base. *Height 8 1/4 inches (20.9 cm).*

**\$600-800**



181

**French Gilt Bronze Grand Tour Columnar Monument**

Estate / Collection: Property of a Fifth Avenue Philanthropist

*Height 9 3/4 inches.*

**\$400-600**



# DOYLE

Property of a Fifth Avenue Philanthropist Nov 7, 2024 - Nov 8, 2024



182

## Two Louis XVI Style Gilt Bronze Candlestick Lamps

Estate / Collection: Property of a Fifth Avenue Philanthropist

Each of husk swag draped fluted columnar form on a circular base. *Heights 11 1/4 inches (28.5 cm), and 10 1/4 inches (26 cm).*

\$500-800



183

## Louis XVI Gilt Bronze Mounted Mahogany Adjustable Galleried Stand Last quarter 18th century

Estate / Collection: Property of a Fifth Avenue Philanthropist

The circular galleried top raised on a faceted stem on three swag legs. *Height closed 26 1/4 inches (67 cm), diameter of top 7 1/2 inches (19 cm), diameter of base 9 1/2 inches (24 cm).*

\$600-900



184

## Louis XVI Marble Top Inlaid Marquetry Side Table a Ecrire Attributed to Jean-Francois Hache, last quarter 18th century

Estate / Collection: Property of a Fifth Avenue Philanthropist

The rectangular three quarter galleried marble top above a slide over two drawers, one end with a long drawer fitted with inkwells, raised on tapering square legs ending in casters. *Height 30 inches (76 cm), width 18 inches (46 cm), depth 12 inches (30.5 cm).*

A similar table is illustrated Rene Fonvielle, *La Dynastie des Hache*, ill. 93.

\$5,000-7,000



185

## Assembled Three-Piece English Porcelain Maroon-Ground Two-Handled Garniture Together With a Maroon-Ground Specimen Plate

Estate / Collection: Property of a Fifth Avenue Philanthropist

Circa 1830-40

The vases of 'Coalbrookdale-Type', each of baluster form flanked by upright entwined branch handles, the center painted with a cluster of flowers, the rocaille molded lip and foot enriched in salmon, *height of tallest 10 3/8 inches (26.4 cm), height of pair 9 inches (22.9 cm)*; the plate, probably Rockingham, with partial iron-red pattern number, the center painted with a cluster of pansies, the shaped-border enriched with paired gilt leaves and scattered sprigs, *diameter 10 1/2 inches (26.7 cm).*

\$300-500

# DOYLE

Property of a Fifth Avenue Philanthropist Nov 7, 2024 - Nov 8, 2024



186

## Empire Style Gilt Bronze Bouillotte Lamp

Estate / Collection: Property of a Fifth Avenue Philanthropist

The reeded columnar stem with fruit basket capital issuing three bird-form scrolling branches, in a dished galleried base. *Height 9 inches (23 cm).*

**\$300-500**



187

## Pair of Louis XV Style Giltwood Wall Brackets

Estate / Collection: Property of a Fifth Avenue Philanthropist

Each carved with a shell and foliage. *Height 17 inches (43 cm), width 12 inches (31 cm), depth 7 inches (18 cm).*

**\$800-1,200**



188

## Pair of French Porcelain Gilt-Metal Mounted Cache Pots Late 19th/20th century, possibly Samson

Estate / Collection: Property of a Fifth Avenue Philanthropist

Each rim with pink and green trellis centering paired roses alternate with berried vine and suspending floral swags, the circular base cast as a berried wreath. *Height 8 1/2 inches (20.3 cm), diameter 9 inches (22.9 cm).*

**\$300-500**



189

## Louis XVI Style Gilt Bronze Covered Ink Pot with Satyr Finial and a Gilt Bronze Boar's Head Inkwell 19th Century

Estate / Collection: Property of a Fifth Avenue Philanthropist

*Height of ink pot 6 1/2 inches (16 cm), diameter 4 inches (10 cm), height of boar's head 5 1/4 inches (14 cm), length 7 inches (18 cm).*

**\$400-600**

# DOYLE

**Property of a Fifth Avenue Philanthropist** Nov 7, 2024 - Nov 8, 2024

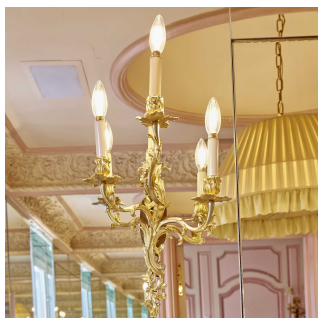


190

**Two Kate Houston Porcelain Models of Cabbages and a Third Modeled as an Onion Dated 2007 or 2010**

Estate / Collection: Property of a Fifth Avenue Philanthropist  
With black initials KHO and other marks; naturalistically molded and painted as a lavender tinged lettuce and a red cabbage, the large purple onion sprouting green shoots. *Diameter of largest 10 inches (25.4 cm).*

**\$300-500**



191

**Pair of Louis XV Style Gilt Bronze Three-Light Sconces**

Estate / Collection: Property of a Fifth Avenue Philanthropist  
Each with a foliate scroll back issuing three foliate scroll branches in staggered heights. *Height 14 inches (36 cm), width 11 inches (28 cm).*

**\$400-600**



192

**Pair of Upholstered Club Chairs  
20th Century**

Estate / Collection: Property of a Fifth Avenue Philanthropist  
Each with a pleated skirt. *Height of back 35 inches (89 cm), height of seat 14 inches (36 cm), width 31 inches (79 cm), depth 34 1/2 inches (88 cm).*

**\$500-700**



193

**Pair of Louis XVI Style Upholstered Giltwood Footstools  
19th Century**

Estate / Collection: Property of a Fifth Avenue Philanthropist  
Each oval with a beaded and leaf tip frieze raised on turned fluted legs with rosette joins. *Height 8 3/4 inches (22 cm), width 15 inches (38 cm), depth 12 inches (30.5 cm).*

**\$500-700**

# DOYLE

Property of a Fifth Avenue Philanthropist Nov 7, 2024 - Nov 8, 2024



194

**Set of Four Custom Lacquered and Acrylic Tables**  
**Late 20th century**

Estate / Collection: Property of a Fifth Avenue Philanthropist  
Comprising one large and three small tables, each circular top on three plank supports. *Height of largest 23 inches (58.5 cm), diameter 33 inches (84 cm), height of smaller 19 inches (48.5 cm), diameter 17 inches (43. cm).*

**\$700-1,000**

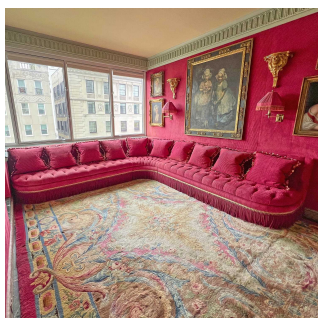


195

**Chinese Transitional-Style Dragon Vase, as Lamp**

Estate / Collection: Property of a Fifth Avenue Philanthropist  
Ovoid decorated with dragons, with a fringed shade. *Height approximately 14 inches.*

**\$400-600**



196

**Tufted Upholstered Sectional Sofa**  
**Late 20th century**

Estate / Collection: Property of a Fifth Avenue Philanthropist  
With button tufted back and seat, with tassle fringe. **Together with Ten Fringed Cushions.**

**\$1,000-2,000**



197

**Louis XVI Style Tulipwood and Kingwood Bibliotèque**  
**19th Century**

Estate / Collection: Property of a Fifth Avenue Philanthropist  
The rectangular top above a pair of glazed doors over two slides and a pair of cupboard doors, all flanked by canted corners, raised on tapering square legs. *Height 6 feet (184 cm), width 51 inches (129.5 cm), depth 15 inches (38 cm).*

**\$2,000-3,000**



# DOYLE

Property of a Fifth Avenue Philanthropist Nov 7, 2024 - Nov 8, 2024



198

**Louis XVI Style Gilt Bronze Six-Light Chandelier**

Estate / Collection: Property of a Fifth Avenue Philanthropist

The tied ribbon-form stem issuing six foliate scroll branches. *Height 34 inches (86.5 cm), diameter 26 inches (66 cm).*

**\$1,500-2,500**



199

**Louis XV / XVI Kingwood and Tulipwood Side Cabinet  
Third quarter 18th century**

Estate / Collection: Property of a Fifth Avenue Philanthropist

The three quarter galleried marble top above a pair of doors with false book spines, over a leather inset writing slide, over a pair of grille doors, raised on cabriole legs. *Height 40 1/4 inches (102.2 cm), width 28 1/4 inches (72 cm), depth 13 inches (33 cm),*

**\$1,500-2,000**



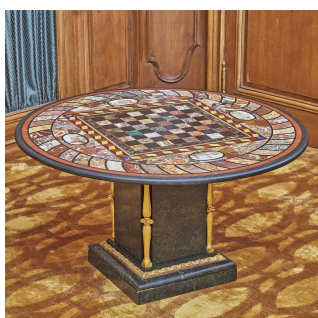
200

**Upholstered Loose Cushion Settee  
20th Century**

Estate / Collection: Property of a Fifth Avenue Philanthropist

With sloping arms and pleated skirt. *Height of back 27 inches (69 cm), height of seat 19 inches (48.5 cm), width 58 inches (147 cm), depth 38 inches (97 cm).*

**\$400-600**



201

**Italian Grand Tour Pietra Dura and Micromosaic Table Top on a Gilt Bronze and Marble Base**

Estate / Collection: Property of a Fifth Avenue Philanthropist

The circular specimen marble top with a checkerboard to center with vignettes of the Pantheon, the Colosseum, St. Peter's and the Roman Forum, with a spiral border, the block base with engaged columns to corners. *Height 18 1/2 inches (47 cm), diameter 36 inches (91.5 cm).*

**\$4,000-6,000**



# DOYLE

Property of a Fifth Avenue Philanthropist Nov 7, 2024 - Nov 8, 2024



202

**Four Tiger Velvet Pillows**  
**Late 20th century**

Estate / Collection: Property of a Fifth Avenue Philanthropist  
*Each approximately 15 1/2 inches (39.5 cm), square.*

**\$400-600**



203

**Chinese Brown Glazed Pottery Elephant-Form Garden Seat**  
**20th century**

Estate / Collection: Property of a Fifth Avenue Philanthropist  
Of typical stylized form with square platform seat upon caparisoned body. *Height 22 1/2 inches (57 cm).*

**\$400-600**



204

**Pair Louis XVI Style Marble Inset Carved Giltwood Wall Mounted Consoles**

Estate / Collection: Property of a Fifth Avenue Philanthropist  
Each with a shaped marble top above a foliate frieze hung with husk swags, raised on cabriole legs with ram's mask joins, the stretcher with a basket of flowers. *Height 35 1/4 inches (89.5 cm), width 28 1/2 inches (72.5 cm), depth 13 inches (33 cm).*

**\$3,000-4,000**



205

**Louis XVI Gilt Bronze Clock**  
**Detour, Paris, late 18th century**

Estate / Collection: Property of a Fifth Avenue Philanthropist  
With a swag draped urn-form finial above a circular dial with wreath crest, the shaped base with laurel branches, raised on button feet. *Height 14 1/2 inches (37 cm), width 9 1/2 inches (24 cm).*

Provenance: Jacques Perrin, Paris, 1990s

**\$5,000-7,000**

# DOYLE

Property of a Fifth Avenue Philanthropist Nov 7, 2024 - Nov 8, 2024



206

**Pair French Porcelain Pink-Ground Two-Handled Vases and Covers**  
**Late 19th/20th century, with blue crossed arrows marks**

Estate / Collection: Property of a Fifth Avenue Philanthropist

Of shield shape, the fluted striated neck flanked by upright loop branch handles, the front painted en *camaieu rose* with either Bacchus holding a thyrsus and wine cup or Venus with Cupid within a gilt ribbon-tied surround, the obverse with wooded landscapes, on a conforming socle and canted square base. *Height 13 inches (33 cm).*

**\$400-600**



207

**Group of Gilt Metal Mounted Porcelain Articles**  
**19th/20th Century**

Estate / Collection: Property of a Fifth Avenue Philanthropist

Comprising two Chinese and five Asian-style European porcelain vessels of varying forms with Continental-style mounts. *Height of largest 8 1/4 inches (21 cm).*

**\$400-600**



208

**Pair of Continental Empire Style Painted and Parcel Gilt Wood Tufted Upholstered Seats**

Estate / Collection: Property of a Fifth Avenue Philanthropist

Each rectangular button tufted seat above a plinth base, the front panel with crossed cornucopia, the ends with masks. *Height 22 inches (56 cm), width 20 inches (51 cm), depth 16 inches (41 cm).*

**\$700-1,000**



209

**Pair of Louis XV Style Gilt Bronze Two-Light Candelabra Lamps**

Estate / Collection: Property of a Fifth Avenue Philanthropist

Each with foliate scroll branches centering flowers, raised on a tripartite foliate scroll base. *Height 7 1/4 inches (18.5 cm), width 6 1/2 inches (16.5 cm).*

**\$800-1,200**

# DOYLE

Property of a Fifth Avenue Philanthropist Nov 7, 2024 - Nov 8, 2024



210

**Louis XVI Style Gilt Bronze Wall Clock and Barometer Set**  
**Edward F. Caldwell, New York, early 20th century**

Estate / Collection: Property of a Fifth Avenue Philanthropist

The tied ribbon with three interlocking laurel wreathes, above a circular dial with husk border above a satyr's mask. *Height 44 3/4 inches (113.5 cm), width 9 inches (23 cm).*

Provenance:

Sotheby's New York, May 20-21, 1997, *The Estate of Ambassador Pamela Harriman*

**\$3,000-4,000**



211

**Pair of Gilt Bronze Mounted Rock Crystal Obelisks**

Estate / Collection: Property of a Fifth Avenue Philanthropist

*Height 25 inches (64 cm), base 5 1/4 inches (13.3 cm), square.*

**\$2,000-4,000**



212

**Regence Style Upholstered Giltwood Bench**

Estate / Collection: Property of a Fifth Avenue Philanthropist

The rectangular seat above a frieze carved with shells and foliate scrolls, raised on cabriole legs. *Height 20 inches (51 cm), width 26 inches (67 cm), depth 20 inches (51 cm).*

**\$400-600**



213

**Pair of Louis XV Style Upholstered Giltwood Chaises à la Reine**  
**19th Century**

Estate / Collection: Property of a Fifth Avenue Philanthropist

Each shaped rectangular back with a floral crest, the frame and chair rail carved with flowers, raised on cabriole legs. *Height of back 33 1/2 inches (85 cm), height of seat 17 1/2 inches (44.5 cm), width 20 inches (51 cm), depth 17 1/2 inches (44 cm).*

**\$800-1,200**

# DOYLE

Property of a Fifth Avenue Philanthropist Nov 7, 2024 - Nov 8, 2024



214

## Chinoiserie Red Lacquered Cube Low Table

Estate / Collection: Property of a Fifth Avenue Philanthropist

The square top with a riverscape, with open side and base stretcher. *Height 18 1/4 inches (46.5 cm), 18 1/4 inches (46.5 cm), square.*

**\$150-250**



215

## Chinese Famille Rose Porcelain Stupa Qianlong Mark, Late Qing Dynasty

Estate / Collection: Property of a Fifth Avenue Philanthropist

The main section molded with a flame-like opening and surmounted by a tiered tower with bell-shaped top and double-gourd finial; the fitted, tiered base crafted with openwork waist and supporting columns. *Height 18 inches (45.7 cm).*

**\$8,000-12,000**



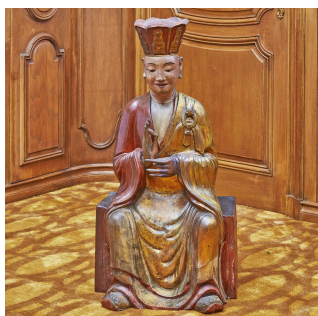
216

## Chinese Glazed Pottery Head and Torso of a Guardian Possibly Ming Dynasty

Estate / Collection: Property of a Fifth Avenue Philanthropist

The brown glazed partial figure depicted in full ceremonial armor. *Height 13 inches (33 cm).*

**\$2,000-3,000**



217

## Chinese Lacquered Wood Figure of Xuanzang 20th Century

Estate / Collection: Property of a Fifth Avenue Philanthropist

The crowned figure with loose robes depicted in a seated position upon a rectangular plinth. *Height 28 inches.*

**\$500-700**

# DOYLE

Property of a Fifth Avenue Philanthropist Nov 7, 2024 - Nov 8, 2024



218

**Faux Tortoise and Acrylic Center Table**  
**20th Century**

Estate / Collection: Property of a Fifth Avenue Philanthropist  
The circular top raised on three flat plank legs. *Height 28 3/4 inches, diameter 42 inches (107 cm).*

**\$500-800**



219

**Set of Four Louis XVI Upholstered Painted and Parcel Gilt Side Chairs**

Estate / Collection: Property of a Fifth Avenue Philanthropist  
Each oval back and circular seat with repeating leaf tip border, raised on turned fluted legs. *Height of back 35 1/2 inches (90 cm), height of seat 19 inches (48 cm), width 19 1/2 inches (49.5 cm), depth 18 inches (46 cm).*

**\$1,000-2,000**



220

**French Terracotta Group of Bacchantes and Goat**  
**After Clodion, probably 19th century**

Estate / Collection: Property of a Fifth Avenue Philanthropist  
*Height 19 1/2 inches (49.5 cm), width 20 1/2 inches (52 cm), depth 9 inches (23 cm).*

**\$2,000-3,000**



221

**Louis XV Gilt and Patinated Bronze Bull Clock**  
**Chardon, Paris, 18th century**

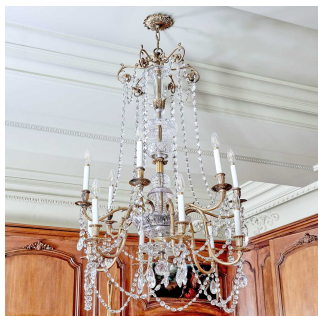
Estate / Collection: Property of a Fifth Avenue Philanthropist  
With an Oriental figure above a circular dial signed "Chardon a Paris", on the back of a bull on a shaped oval base. *Height 17 1/2 inches (45.5 cm), width 14 inches (35.5 cm).*

**\$5,000-7,000**



# DOYLE

Property of a Fifth Avenue Philanthropist Nov 7, 2024 - Nov 8, 2024



222

## Louis XV Style Cut Glass and Gilt Metal Twelve-Light Chandelier

Estate / Collection: Property of a Fifth Avenue Philanthropist

The urn-form stem issuing two tiers of scrolling branches hung with glass bead chains and prisms. *Height 45 inches (114 cm), diameter 26 inches (66 cm).*

**\$2,000-4,000**



223

## Louis XVI Marble Top Giltwood Wall Mounted Console 1780s

Estate / Collection: Property of a Fifth Avenue Philanthropist

The shaped demilune form above a frieze of openwork foliate scrolls hung with floral swags, on three foliate scroll supports and a plinth base. *Height 34 1/4 inches (87 cm), width 48 inches (122 cm), depth 18 inches (46 cm).*

**\$4,000-6,000**



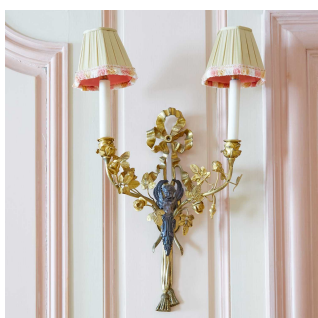
224

## Regence Style Giltwood Border Glass Mirror

Estate / Collection: Property of a Fifth Avenue Philanthropist

The arched crest with flowers and foliate scrolls centering rocaille, the shaped border with conforming design. *Height 58 inches (147.5 cm), width 35 inches (89 cm).*

**\$2,000-3,000**



225

## Set of Four Louis XVI Style Patinated and Gilt Bronze Two- Light Sconces

Estate / Collection: Property of a Fifth Avenue Philanthropist

Each with a tied ribbon above a winged figure issuing rose branch branches. *Height 17 1/4 inches (44 cm), width 12 inches (30.5 cm).*

**\$1,000-2,000**

# DOYLE

**Property of a Fifth Avenue Philanthropist** Nov 7, 2024 - Nov 8, 2024

226

### Louis XVI Style Mahogany, Marble, and Brass Three-Tier Dumbwaiter

Estate / Collection: Property of a Fifth Avenue Philanthropist

The circular galleried tiers raised on a fluted stem and three hipped legs. *Height 48 inches (122 cm), diameter 21 1/2 inches (54.5 cm).*

**\$1,500-2,500**



227

**Group of Famille Verte Glazed Porcelain Articles  
20th Century and Earlier**

Estate / Collection: Property of a Fifth Avenue Philanthropist

Comprising three standing figures, a fu dog on stand, a carp-form incense holder, a figure of Liu Hai, and a yellow glazed bowl. *Height of largest 10 inches (25.5 cm).*

**\$400-600**



228

**Eighteen Chinese Jadeite Carvings**  
**20th Century**

Estate / Collection: Property of a Fifth Avenue Philanthropist

Various traditional forms. *Height of largest 6 inches (15.2 cm).*

**\$800-1,200**



229

**Group of Chinese Jade Carvings**  
**20th Century**

Estate / Collection: Property of a Fifth Avenue Philanthropist

Comprising thirteen articles of varying forms and colors. *Height of largest 8 1/2 inches (21.5 cm).*

**\$1,000-1,500**

# DOYLE

Property of a Fifth Avenue Philanthropist Nov 7, 2024 - Nov 8, 2024



230

**Six Chinese Jadeite Figural Carvings  
Late Qing Dynasty and After**

Estate / Collection: Property of a Fifth Avenue Philanthropist  
Comprising five depictions of Guanyin and a carving of Shoulao. *Height of largest 6 inches (15.3 cm).*

**\$2,500-3,500**



231

**Large Group of Chinese Porcelain Devotional Figures  
19th/20th Century**

Estate / Collection: Property of a Fifth Avenue Philanthropist  
Comprising ten kneeling figures of happy attendants, two painted figures of Budai, and six Daoist immortals on gilt metal bases; with pair of export porcelain parrots. *Height of largest 10 1/4 inches (26 cm).*

**\$1,000-1,500**



232

**Pair of Empire Gilt Bronze Chenets and Fender  
19th Century**

Estate / Collection: Property of a Fifth Avenue Philanthropist  
Each with a collection of military trophies, the shaped base with arrow and interlacing wreathes. *Height 15 1/4 inches (39 cm), length overall 44 1/2 inches (113 cm), depth 5 1/2 inches (14 cm).*

**\$1,000-1,500**

# DOYLE

Property of a Fifth Avenue Philanthropist Nov 7, 2024 - Nov 8, 2024



233

## **Matched Pair of Gilt-Bronze Mounted Meissen Style Porcelain Models of Elephants**

Estate / Collection: Property of a Fifth Avenue Philanthropist

The clock late 19th century, the porcelain possibly Samson, the dial inscribed 'Paris'; the barometer 'BAROMÈTRE ANÉROÏDE'; in the Louis XV style, each elephant after a Meissen model attributed to Peter Reinicke, depicted with a tasseled saddle cloth, the circular drum supporting a basket issuing a bouquet of tôle branches applied with porcelain flowerheads, the stepped canted rectangular base applied with flowers at each corner. *Height 9 1/4 inches (23.5 cm).*

Peter Reinicke (1715-68), was a modeler at Meissen and an assistant to Johann Joachim Kändler. The current model is based on a collaborative work of a comparison figure group of 1743 of an elephant bearing a sultan on its back driven by a mahout at the front. The elephant was designed by P. Reinicke and the figures by J.J. Kändler. For an 18th century example, see The Collection of Ezra & Cecile Zilkha, Sotheby's, New York, 20 November 2020, lot 93.

**\$600-800**



234

## **Eight Meissen Style Porcelain Models of Pugs**

**Late 19th/20th century**

Estate / Collection: Property of a Fifth Avenue Philanthropist

Each naturalistically modeled seated, their bell and bow collars enriched in gilt and all but one trimmed in blue, five left face and three right face including one smaller example. *Height of largest 5 inches (12.7 cm).*

**\$300-500**



235

## **Pair of Mottahedeh Porcelain Swan-Form Two-Light Candelabra** **20th century**

Estate / Collection: Property of a Fifth Avenue Philanthropist

In the Meissen style, each naturalistically modeled roosting among reeds, the twin candle arms issuing tôle branches with white flowerheads, set on a rocaille-molded scroll foot. *Height 8 1/2 inches (21.6 cm).*

**\$400-600**

# DOYLE

Property of a Fifth Avenue Philanthropist Nov 7, 2024 - Nov 8, 2024



236

**Faïence Japonisme Sang-de-Boeuf Ground Bottle Vase**  
**Late 19th/20th century**

Estate / Collection: Property of a Fifth Avenue Philanthropist  
With black painted model no. 2479; asymmetrically enriched with raised gilt cherry blossom branches, the mouth with powdered gilt. *Height 12 1/4 inches (31.1 cm).*

**\$100-200**



237

**Regence Style Giltwood Marble Inset Side Table**  
**19th Century**

Estate / Collection: Property of a Fifth Avenue Philanthropist  
The rectangular top with rocaille border, above a frieze drawer with scrolls and diaperwork, raised on cabriole legs. *Height 25 3/4 inches (65 cm), width 20 1/2 inches (52 cm), depth 16 1/2 inches (42 cm).*

**\$500-700**



238

**Chinese Jadeite Carving of Guanyin**

Estate / Collection: Property of a Fifth Avenue Philanthropist  
The seated figure depicted with a serene expression in typical attire. *Height 4 inches (10 cm).*

**\$1,000-1,500**



239

**Sevres Porcelain Gilt-Bronze Mounted Turquoise Vase and Cover and Similar Sevres Style Bowl**

Estate / Collection: Property of a Fifth Avenue Philanthropist  
The decoration and mounts mid-19th century, later decorated pot-pourri vase. The oviform vase with pierced gallery, the shallow domed cover with a carnation finial, the body painted with a central vignette of birds perched on branches within a gilt cartouche, the shoulder flanked by paired coiled snake handles with goat mask terminals, the obverse with flowers, on a fluted foliate socle foot and square base, *height 9 inches (22.9 cm)*; the bowl painted front and back with birds strutting in landscapes, within a gilt foliate cartouche, raised on three monopodia feet, gilt dentil rim, *diameter 6 1/2 inches (16.5 cm).*

**\$700-900**



# DOYLE

Property of a Fifth Avenue Philanthropist Nov 7, 2024 - Nov 8, 2024



240

**Pair of Sevres Porcelain (Later-Decorated) Pink and Green Ground Cache Pots (Seaux à Verre)**

Estate / Collection: Property of a Fifth Avenue Philanthropist

The porcelain 18th century, the decoration 19th century, spurious blue interlaced L's marks; each center painted with either a seated maiden holding a scythe harvesting flowers or a young boy playing a horn beside a basket of flowers in a garden landscape, within gilt enriched green swags suspending husks, the obverse with a tight cluster of fruit, the green banded lip with double gilt scrolls and the conforming foot with a gilt line. *Height 5 1/2 inches (14 cm).*

Provenance:

With Antique Porcelain Company, Inc., New York (labels).

**\$500-700**



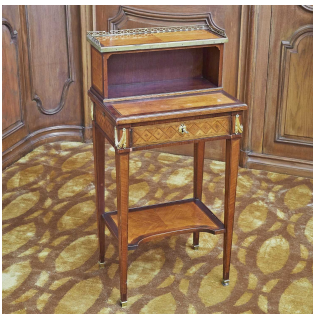
241

**Pair of Louis XVI Style Silk Damask Upholstered Grey Painted Fauteuils à la Reine**

Estate / Collection: Property of a Fifth Avenue Philanthropist

Each oval back with ribbon crest and husk border, above padded arms, the frames carved with guilloche and foliage, raised on turned fluted legs. *Height of back 37 1/2 inches (95 cm), height of seat 17 inches (43 cm), width 26 inches (66 cm), depth 63.5 cm).*

**\$1,000-2,000**



242

**Louis XVI Style Kingwood and Tulipwood Table de Chevet**

Estate / Collection: Property of a Fifth Avenue Philanthropist

The rectangular three quarter galleried top above an open shelf, over a frieze drawer with slides to each end, raised on tapering square legs with a shaped rectangular shelf stretcher. *Height 36 1/4 inches (92.5 cm), width 18 inches (46 cm), depth 13 inches (33 cm).*

**\$400-600**



243

**Louis XVI Caned and Leather Upholstered Painted Wood Fauteuil  
Jean-Baptiste Boulard, Paris, last quarter 18th century**

Estate / Collection: Property of a Fifth Avenue Philanthropist

With reeded frame, the arched crest above padded arms, raised on turned stop fluted legs, stamped Boulard. *Height of back 33 1/2 inches (85 cm), height of seat 19 1/2 inches (49.5 cm), width 26 inches (66 cm), depth 19 inches (48.3 cm).*

Provenance: Patrick Perrin, Paris, 2000s

**\$600-900**

# DOYLE

Property of a Fifth Avenue Philanthropist Nov 7, 2024 - Nov 8, 2024



244

**Thai Ayutthaya-Style Bronze Head of Buddha**  
**20th Century**

Estate / Collection: Property of a Fifth Avenue Philanthropist  
Of typical depiction and with green-tinted patina; mounted to stand. *Height 14 inches (35.5 cm).*

**\$1,500-2,000**



245

**Chinese Carved Agate Phoenix-Head Cup**  
**Late Qing - Republic Period**

Estate / Collection: Property of a Fifth Avenue Philanthropist  
Of rhyton form and carved with freely-hanging ring near mouth. *Height 3 3/4 inches (9.5 cm).*

**\$1,000-1,500**



246

**Chinese Wood and Silver Utensil Set**  
**Qing Dynasty**

Estate / Collection: Property of a Fifth Avenue Philanthropist  
*Length approximately 10 inches (25.5 cm).*

**\$700-900**



247

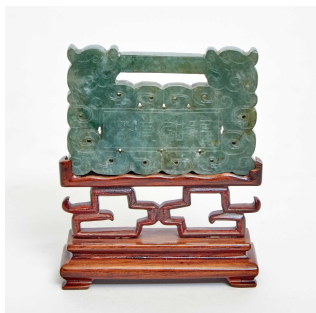
**Three Chinese Pottery Equine Figures**

Estate / Collection: Property of a Fifth Avenue Philanthropist  
Comprising Han and Tang style tomb figures, together with two pottery attendant figures. *Height of largest 17 inches (43 cm).*

**\$1,000-1,500**

# DOYLE

Property of a Fifth Avenue Philanthropist Nov 7, 2024 - Nov 8, 2024



248

**Chinese Jadeite Lock-Form Plaque**  
**Late Qing Dynasty**

Estate / Collection: Property of a Fifth Avenue Philanthropist  
Of deep green hue; fitted wood stand. *Width 3 1/4 inches (8.2 cm).*

**\$700-900**



249

**Chinese Carved Stone Votive Plaque**  
**Dated Tang Dynasty**

Estate / Collection: Property of a Fifth Avenue Philanthropist  
The narrow and pointed icon carved in relief to show figure on double lotus base.  
*Height 8 3/4 inches (22.2 cm).*

**\$1,500-2,000**

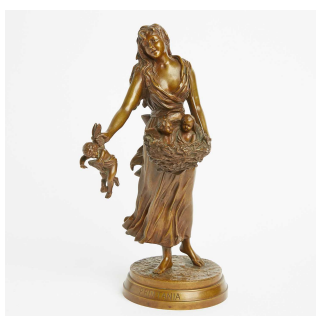


250

**French Patinated Bronze Vase**

Estate / Collection: Property of a Fifth Avenue Philanthropist  
Signed "F Charpentier" (Felix M. Charpentier). *Height overall 24 inches (61 cm), width 12 inches (31 cm).*

**\$3,000-4,000**



251

**French Bronze Figure of the Cupid Seller "Printania"**

Estate / Collection: Property of a Fifth Avenue Philanthropist  
Inscribed *Susse Freres* underside, and Ex. Bosso. *Height 12 3/4 inches (32.5 cm), diameter of base 5 inches (12.5 cm).*

**\$500-700**

# DOYLE

Property of a Fifth Avenue Philanthropist Nov 7, 2024 - Nov 8, 2024



252

## Chinoiserie Decorated Tole Covered Kindling Bin

Estate / Collection: Property of a Fifth Avenue Philanthropist

Rectangular, the cover and front with Oriental figures with gilt foliate borders, raised on paw feet. *Height 18 inches (46 cm), width 21 inches (53.5 cm), depth 14 inches (36 cm).*

**\$200-300**



253

## Louis XV / XVI Marble Top Mahogany and Satinwood Cabinet Francois Rubestuck, Paris, mid 18th Century

Estate / Collection: Property of a Fifth Avenue Philanthropist

The shaped marble top above a frieze drawer over a slide with a leather inset writing surface, over a pair of doors, raised on cabriole feet, stamped *Rubestuck*. *Height 34 1/2 inches (87.5 cm), width 33 3/4 inches (86 cm), depth 17 1/2 inches (44.5 cm).*

Provenance: Jacques Perrin, Paris, 1990s

**\$7,000-10,000**



254

## Pair of Samson Porcelain Gilt-Bronze Mounted Famille Verte Ginger Jars and Covers as Pot Pourri 19th-20th Century

Estate / Collection: Property of a Fifth Avenue Philanthropist

In the Chinese taste, each domed cover with berried finial painted with exotic flowers and insects, resting on a pierced entwined ribbon gallery, the body painted in the *famille verte* palette with vertical panels of flowers, trees and rockwork alternate with vases set among scholar's objects and auspicious Buddhist emblems, the seeded ogival reserves with spaced red and yellow flowers, set on a berried wreath and canted square base. *Height 10 1/4 inches (26 cm).*

**\$1,000-1,500**

# DOYLE

Property of a Fifth Avenue Philanthropist Nov 7, 2024 - Nov 8, 2024

255



**Pair of Coalport Porcelain Pink-Ground Vases and Covers as Table Lamps**  
Circa 1850-1860

Estate / Collection: Property of a Fifth Avenue Philanthropist

After the Sevres vase '*Flacon à Cordes*', of bottle shape with slightly domed cover, the neck and shoulder with gilt cords, each finely painted after Boucher, one with a shepherd seated among his flock releasing a dove carrying a love letter, the other with a shepherdess and her expectant hound spying a dove carrying a love letter, within a seeded gilt foliate cartouche, each obverse with a flower and fruit bouquet, on a socle foot and square base, offered with later pink and green tasseled and fringed shades. *Height 11 1/2 inches (29.2 cm).*

For an example of this form, see Michael Messenger, '*Coalport 1795-1926*' (1995), pl. 190. Also review the pair at The Victoria & Albert Museum, London, object nos. C.561B&C-1935 and C.561&A-1935 (noting CBD marks).

**\$700-900**

256



**Pair of Gilt Metal, Blue Enamel, and Marble Two-Light Girandole Candelabra**

Estate / Collection: Property of a Fifth Avenue Philanthropist

Each baluster-form stem issuing scrolling branches and a pinnacle with crescent moon finial and hung with drops, on a square base. *Height 14 1/2 inches (37 cm), width 9 1/2 inches (24 cm).*

**\$300-500**

257



**Louis XV Style Needlepoint Upholstered Painted Wood Footstool**  
20th Century

Estate / Collection: Property of a Fifth Avenue Philanthropist

The rectangular top with British Royal arms, with a nailhead trim, the frieze with carved flowers, raised on cabriole feet. *Height 10 inches (26 cm), length 16 inches (41 cm), depth 12 3/4 inches (32.5 cm).*

**\$200-400**

258



**Louis XV Upholstered Painted and Parcel Giltwood Fauteuil a la Reine**

Estate / Collection: Property of a Fifth Avenue Philanthropist

The arched back with floral crest, above padded arms, over a serpentine seat with floral carved rail, raised on cabriole legs with flowers to knees. *Height of back 38 1/4 inches (97 cm), height of seat 15 1/4 inches (39 cm), width 30 3/4 inches (78 cm), depth 34 inches (86.5 cm).*

**\$2,000-3,000**



# DOYLE

Property of a Fifth Avenue Philanthropist Nov 7, 2024 - Nov 8, 2024



259

**Pair of Ceramic Camel Form Garden Seats**  
**20th Century**

Estate / Collection: Property of a Fifth Avenue Philanthropist  
Each realistically modelled in a kneeling position with a flat table surface to back.  
*Height 20 inches (51 cm), length 26 inches (66 cm), depth 11 inches (28 cm).*

**\$600-900**



260

**Pair of Neoclassical Style Gilt Bronze Covered Pots**

Estate / Collection: Property of a Fifth Avenue Philanthropist  
*Height overall 8 inches (20.5 cm), diameter 6 1/2 inches (16.5 cm).*

**\$400-600**



261

**Pair of Louis XV Style Gilt and Patinated Metal Three-Light Candelabra Lamps**

Estate / Collection: Property of a Fifth Avenue Philanthropist  
Each with a figure of a skater amongst three foliate scroll branches in varying heights.  
*Height 10 1/2 inches (26.5 cm), width 9 inches (23 cm).*

**\$600-900**



262

**Pair of Louis XV Upholstered Giltwood Fauteuils à la Reine**  
**Jean-Baptiste Meunier, Paris, mid 18th century**

Estate / Collection: Property of a Fifth Avenue Philanthropist  
Each with an arched flower carved crest, above padded arms over a serpentine seat, with a floral carved seat rail and raised on cabriole legs, stamped *Meunier*. *Height of back 36 inches (92 cm), height of seat 17 inches (43 cm), width 27 inches (69 cm), depth 24 inches (61 cm).*

Provenance: Jacques Perrin, Paris, 1990s

**\$6,000-9,000**

# DOYLE

Property of a Fifth Avenue Philanthropist Nov 7, 2024 - Nov 8, 2024



263

## Louis XVI Style Gilt Bronze and Marble Gueridon

Estate / Collection: Property of a Fifth Avenue Philanthropist

The circular top raised on three concave legs with scroll finials, with a circular shelf stretcher above a triangular stretcher with flaming urn finial, ending in paw feet.

*Height 27 inches (69 cm), diameter 20 3/4 inches (53 cm).*

**\$1,500-3,000**



264

## Chinese Carved Agate Vase and Cover Late Qing - Republic Period

Estate / Collection: Property of a Fifth Avenue Philanthropist

Carved with openwork, high-relief flowers; together with five rock crystal Buddhist figures. *Height of agate 6 3/4 inches.*

**\$600-800**



265

## Four Chinese Figural Pottery Sculptures Han Dynasty and Later

Estate / Collection: Property of a Fifth Avenue Philanthropist

Comprising a Han Pottery Head of an Attendant, a Song-Yuan Stucco Head of a Bodhisattva, a Longquan Figure of Guanyin, and a Tilework Figure of Sun Wukong. *Height of stucco head 7 inches (17.8 cm).*

**\$1,500-2,000**



266

## Chinese Longquan Celadon Tripod Censer and Cover Ming Dynasty

Estate / Collection: Property of a Fifth Avenue Philanthropist

The rounded, lobed body with incised decoration raised on tapering tripod legs; the rim molded with twin rope-twist handles; custom wood base and vented cover.

*Height 10 1/2 inches (26.5 cm).*

(Dimensions: Height 10 1/2 inches)

**\$4,000-6,000**

# DOYLE

Property of a Fifth Avenue Philanthropist Nov 7, 2024 - Nov 8, 2024

267

**Chinese Longquan Celadon Bowl**  
**Ming Dynasty**

Estate / Collection: Property of a Fifth Avenue Philanthropist  
Of lobed form; decorated with a phoenix amongst scrolling foliage to central medallion; the interior and exterior sides incised with blossoms. *Diameter 14 3/4 inches (37.5 cm).*

**\$15,000-20,000**



268

**Chinese Green Glazed Pottery Tripod Censer**  
**Likely Han Dynasty**

Estate / Collection: Property of a Fifth Avenue Philanthropist  
Of cylindrical form and with later wood base; together with an amber-glazed censer. *Diameter 8 1/4 inches (21 cm).*

**\$700-900**



269

**Louis XV Style Upholstered Painted and Parcel Gilt Tabouret**  
**20th Century**

Estate / Collection: Property of a Fifth Avenue Philanthropist  
The square seat above a scroll frieze, raised on cabriole legs with flowers at knees. *Height 15 3/4 inches (40 cm), 22 1/4 inches (56 cm), square.*

**\$600-900**

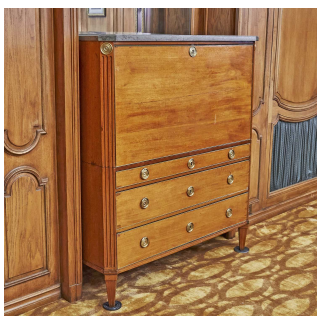


270

**Louis XVI Brass Mounted Mahogany Secrétaire a Abattant**  
**Possibly Scandinavian, last quarter 18th century**

Estate / Collection: Property of a Fifth Avenue Philanthropist  
The rectangular marble top with canted corners, above a fall front over three graduated long drawer, flanked by reeded stiles, raised on tapering square legs. *Height 55 1/2 inches (141 cm), width 48 inches (122 cm), depth 24 inches (61 cm).*

**\$1,500-2,000**



# DOYLE

Property of a Fifth Avenue Philanthropist Nov 7, 2024 - Nov 8, 2024



271

**Pair of Louis XVI Style Gilt Brass Candlestick Lamps**

Estate / Collection: Property of a Fifth Avenue Philanthropist

Each fluted columnar stem on a domed foliate circular base with tied reeded border. *Height 9 inches (23 cm), diameter of base 4 1/2 inches (11 cm).*

**\$700-1,000**



272

**Three Chinese Hardstone and Silver Desk Articles  
Attributed to Edward Farmer**

Estate / Collection: Property of a Fifth Avenue Philanthropist

Comprising a rectangular box, a footed water coupe, a cylindrical cigarette box with lifting mechanism. *Height of largest 6 1/2 inches (16.5 cm).*

**\$1,000-1,500**



273

**Three Silver and Chinese Hardstone Desk Articles  
Attributed to Edward Farmer**

Estate / Collection: Property of a Fifth Avenue Philanthropist

Comprising a stamp tray, a bell push, and a cylindrical cigarette box with lifting mechanism. *Height of largest 7 3/4 inches (19.6 cm).*

**\$1,000-1,500**



274

**Two Silver and Spinach Jade Desk Articles  
Yamanaka Studio, 20th Century**

Estate / Collection: Property of a Fifth Avenue Philanthropist

Comprising a large covered inkwell on tray, and an ovoid inkwell with a hinged cover. *Width of largest 8 3/4 inches (22.4 cm).*

**\$800-1,200**

# DOYLE

Property of a Fifth Avenue Philanthropist Nov 7, 2024 - Nov 8, 2024



275

**Group of Desk Articles  
20th Century**

Estate / Collection: Property of a Fifth Avenue Philanthropist  
Comprising a gilt metal mounted lacquer inkstand, *length 5 1/2 inches (14 cm)*; hardstone flower ornament, *height 4 1/2 inches*; porcelain mouse ornament, *height 2 inches (5 cm)*; and a gilt metal mounted etched glass vase, *height 11 1/4 inches (29 cm)*.

**\$400-600**



276

**Five Table Magnifying Glasses**

Estate / Collection: Property of a Fifth Avenue Philanthropist  
Including an American sterling silver example, *length 14 1/4 inches (36 cm)*; and a Japanese silver example, *length 12 1/2 inches (32 cm)*.

**\$500-700**



277

**Continental Gilt Metal Mounted Hardstone Etui and Two Gilt Metal Snuff Boxes**

Estate / Collection: Property of a Fifth Avenue Philanthropist  
The etui shaped oval with scroll border and hinged top, *length 4 inches (10 cm)*; one snuff box with scenes of putti, *length 3 1/2 inches (9 cm)*; and one snuff box with a figure of a woman on a mirrored ground, the interior now velvet lined, *length 3 inches (7.5 cm)*.

**\$400-600**



278

**Two Sets of Gilt Bronze Blotter Corners  
20th Century, including a set by P.E. Guerin, New York**

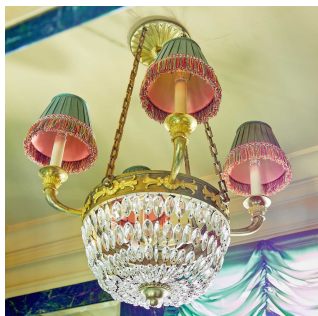
Estate / Collection: Property of a Fifth Avenue Philanthropist  
**Together with an Inlaid Rosewood Desk Caddy and a Group of Marbled Paper Desk Accessories.** Including boxes, letter racks, desk top chests of drawers, etc.  
Approximately twelve pieces.

**\$500-700**



# DOYLE

Property of a Fifth Avenue Philanthropist Nov 7, 2024 - Nov 8, 2024



279

**Empire Style Gilt Bronze and Glass Four-Light Chandelier**  
**20th Century**

Estate / Collection: Property of a Fifth Avenue Philanthropist  
The body with beaded chains issuing four scrolling branches. *Height 27 inches (68.5 cm), diameter 17 1/2 inches (44.5 cm).*

**\$500-700**



280

**Louis XVI Floral Chintz Upholstered Painted and Parcel Giltwood Bergere**

Estate / Collection: Property of a Fifth Avenue Philanthropist  
The shaped crest above padded arms with fluted columnar supports, raised on turned fluted legs. *Height of back 32 inches (82 cm), height of seat 15 1/2 inches (39.5 cm), width 26 inches (66 cm), depth 25 inches (64 cm).*

**\$600-900**

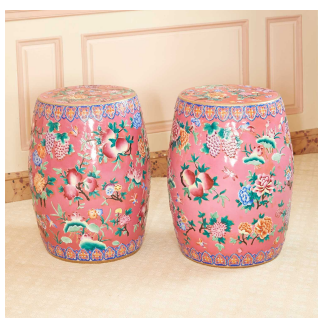


281

**Directoire Floral Chintz Upholstered Painted and Parcel Giltwood Bergere**  
**Late 18th century**

Estate / Collection: Property of a Fifth Avenue Philanthropist  
The scrolling back above padded arms with baluster-form supports, raised on shaped ringed legs. *Height of back 37 inches (94 cm), height of seat 17 1/2 inches (44.5 cm), width 24 1/2 inches (62.5 cm), depth 21 inches (61 cm).*

**\$700-1,000**



282

**Pair of Chinese Enameled Porcelain Garden Stools**  
**20th Century**

Estate / Collection: Property of a Fifth Avenue Philanthropist  
The mouve-ground stools decorated with relief molded insects and flowering plants. *Height 19 inches.*

**\$600-800**

# DOYLE

Property of a Fifth Avenue Philanthropist Nov 7, 2024 - Nov 8, 2024



283

## Louis XV / XVI Style Parquetry Miniature Six-Drawer Chest of Drawers

Estate / Collection: Property of a Fifth Avenue Philanthropist

Height 22 3/4 inches (58 cm), width 12 1/2 inches (32 cm), depth 6 3/4 inches (17 cm).

\$300-400



284

## Louis XV/XVI Style Diminutive Chest of Drawers

Estate / Collection: Property of a Fifth Avenue Philanthropist

The rectangular three quarter galleried marble top above five drawers flanked by canted corners, raised on cabriole legs. Height 35 1/4 inches (89.5 cm), width 14 inches (36 cm), depth 8 3/4 inches (22 cm).

\$400-600



285

## Louis XVI Style Gilt Metal and Kingwood Four-Tier Etagere

Estate / Collection: Property of a Fifth Avenue Philanthropist

The rectangular shelves with out turned corners, on fluted supports with blossom finials, ending in casters. Height 39 1/4 inches (100 cm), width 28 1/4 inches (72 cm), depth 16 inches (41 cm).

\$800-1,200



286

## Group of Louis XVI Style Gilt Metal Picture Frames 20th Century

Estate / Collection: Property of a Fifth Avenue Philanthropist

Various sizes, many with ribbon crest. Approximately eight pieces. Height of largest 7 inches (18 cm), width 5 1/2 inches (14 cm); height of smallest 3 1/4 inches (8.2 cm), width 2 inches (5 cm).

\$400-600

# DOYLE

Property of a Fifth Avenue Philanthropist Nov 7, 2024 - Nov 8, 2024



287

## Assortment of Chinese Enameled Porcelain Articles 19th-20th Century

Estate / Collection: Property of a Fifth Avenue Philanthropist  
Comprising two export dishes, a pitcher, a small covered box, a double-gourd vase, and an imperial-style conjoined vase. *Width of largest 10 1/2 inches (26.8 cm).*

**\$400-600**



288

## Chinese Enameled Porcelain 'Star Gods' Vase

Estate / Collection: Property of a Fifth Avenue Philanthropist  
Mounted as a lamp. *Height of vase 13 inches (33 cm), height with stand 15 3/4 inches (40 cm), diameter 10 1/2 inches (26.5 cm).*

**\$800-1,200**



289

## Painted and Parcel Giltwood Fluted Floor Lamp

Estate / Collection: Property of a Fifth Avenue Philanthropist  
The columnar stem on a circular base with laurel band and raised on button feet. *Height 59 inches (150 cm), diameter of base 16 inches (41 cm).*

**\$200-400**



290

## Pair of Louis XVI Tapestry Upholstered Painted Wood Fauteuils en Cabriolet Last quarter 18th century

Estate / Collection: Property of a Fifth Avenue Philanthropist  
Each with an oval back above padded arms, with a reeded frame and raised on turned fluted legs. *Height of back 34 1/2 inches (87.5 cm), height of seat 15 1/4 inches (38.5 cm), width 23 1/2 inches (59.5 cm), depth 23 1/2 inches (59.5 cm); Together with a Louis XVI Tapestry Upholstered Painted Wood Settee. Height of back 35 1/2 inches (90 cm), height of seat 16 1/2 inches (42 cm), length 6 feet (183 cm), depth 30 inches (77 cm).*

**\$1,500-2,000**

# DOYLE

Property of a Fifth Avenue Philanthropist Nov 7, 2024 - Nov 8, 2024



291

**Louis XVI Gilt Bronze Mounted Kingwood Galleried Multi-Tiered Gueridon**

Estate / Collection: Property of a Fifth Avenue Philanthropist

Circular with four galleried tiers, raised on block scroll feet. *Height 31 1/2 inches (80 cm), diameter 12 inches (30.5 cm).*

**\$2,000-3,000**



292

**Louis XVI Style Painted Canvas Three-Fold Screen**

Estate / Collection: Property of a Fifth Avenue Philanthropist

Each panel painted with a reserve of figures in a landscape. *Height of each panel 67 inches (170 cm), width 21 inches (53.2 cm).*

**\$400-600**



293

**Pair of Louis XV Style Painted and Giltwood Marble Top Wall Mounted Consoles**

Estate / Collection: Property of a Fifth Avenue Philanthropist

Each with a shaped demilune marble top above a carved frieze, raised on a pair of floral foliate scroll supports wrapped with floral garlands. *Height 31 1/2 inches (80 cm), width 32 inches (81.5 cm), depth 12 1/2 inches (31.5 cm).*

**\$1,500-2,500**



294

**Chinese Glass Figure of Guanyin**

**20th Century**

Estate / Collection: Property of a Fifth Avenue Philanthropist

Depicting the standing figure in a flowing robe. *Height 9 1/2 inches (24 cm).*

**\$300-500**

# DOYLE

Property of a Fifth Avenue Philanthropist Nov 7, 2024 - Nov 8, 2024



295

**Large Chinese Rose Mandarin Porcelain Vase  
Late Qing Dynasty**

Estate / Collection: Property of a Fifth Avenue Philanthropist

The tapering ovoid vase with lobed body rising to folded-texture mouth decorated with figural and floral panels; together with smaller pair of export vases. *Height 25 1/2 inches (62 cm).*

**\$2,000-3,000**



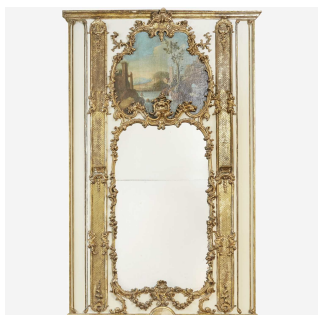
296

**Pair of Charles X Gilt Bronze and Marble Four-Light Candelabra Lamps**

Estate / Collection: Property of a Fifth Avenue Philanthropist

*Height 15 1/4 inches (39 cm), width 11 inches (28 cm).*

**\$3,000-4,000**



297

**Louis XV Painted and Parcel Giltwood Trumeau Mirror**

Estate / Collection: Property of a Fifth Avenue Philanthropist

Rectangular, the upper portion with a riverscape above a shaped rectangular mirror plate, each with flower and scroll border. *Height 6 feet 2 inches (188 cm), width 45 inches (114 cm).*

**\$1,500-2,000**



298

**Louis XVI Brass Mounted Plum Pudding Mahogany Console Desserte  
Last quarter 18th century**

Estate / Collection: Property of a Fifth Avenue Philanthropist

The rectangular three quarter galleried marble top above a frieze drawer, on fluted columns with a marble inset shelf stretcher, raised on toupee feet. *Height 34 inches (86 cm), width 38 1/4 inches (97 cm), depth 15 1/4 inches (39 cm).*

**\$1,500-2,500**



# DOYLE

Property of a Fifth Avenue Philanthropist Nov 7, 2024 - Nov 8, 2024

299

**Group of Four English Porcelain Two-Handled Flower-Encrusted Footed Bowls and Covers**

**Circa 1830-1840, probably Coalport**



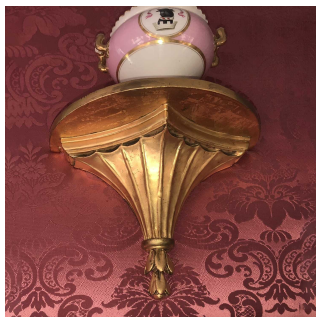
Estate / Collection: Property of a Fifth Avenue Philanthropist  
Of 'Coalbrookdale-Type', each painted with a central bouquet of flowers and scattered insects within variant scrollwork, the domed covers and bowl applied overall with flowers and foliage, including: carnations, roses and quatrefoils, flanked by paired vine handles, on four spreading feet. *Width 5 inches (12.7 cm).*

For a similar Coalport example, see Geoffrey A. Godden, 'The Concise Guide to British Porcelain' (1990) cl. pl. III.

**\$400-600**

300

**Pair of Regency Style Giltwood Wall Brackets**



Estate / Collection: Property of a Fifth Avenue Philanthropist  
Each with a demilune shelf raised on a shaped tapering fluted support. *Height 11 3/4 inches (30 cm), width 11 inches (28 cm), depth 6 inches (15 cm).*

**\$300-500**

301

**Pair of French Porcelain Pink-Ground Cache Pots**

**Late 19th/20th century, blue crossed arrows marks, probably Limoges**



Estate / Collection: Property of a Fifth Avenue Philanthropist  
In the Empire style, the center gilt with a displaying swan within an elaborate lozenge surround, the fuschia banded shoulder flanked by gilt lion mask handles. *Diameter 10 inches (25.4 cm).*

**\$400-600**

302

**Two Neapolitan Polychrome Decorated Terracotta Busts of Putti**



Estate / Collection: Property of a Fifth Avenue Philanthropist  
*Height of larger 3 1/2 inches (9 cm), length 4 1/2 inches (11.5 cm).*

**\$100-200**

# DOYLE

Property of a Fifth Avenue Philanthropist Nov 7, 2024 - Nov 8, 2024



303

**Pair of Upholstered Club Chairs**  
**20th Century**

Estate / Collection: Property of a Fifth Avenue Philanthropist  
Each with a striped slip cover. *Height of back 32 inches (81 cm), height of seat 15 1/2 inches (39.5 cm), width 31 1/2 inches (80 cm), depth 37 inches (94 cm).*

**\$300-500**



304

**Four Upholstered Pillows**

Estate / Collection: Property of a Fifth Avenue Philanthropist  
Each with flowers and foliate scrolls, with tassle fringe. *19 Inches (48 cm), square.*

**\$400-600**



305

**Louis XVI Style Inlaid Mahogany Occasional Table**

Estate / Collection: Property of a Fifth Avenue Philanthropist  
The galleried circular hinged top above a deep frieze raised on slender legs with a galleried shaped triangular shelf stretcher. *Height 28 inches (71 cm), diameter 17 3/4 inches (45 cm).*

**\$400-600**



306

**Mintons Porcelain Pink and Green Ground Desk Set**  
**Dated 1884**

Estate / Collection: Property of a Fifth Avenue Philanthropist  
With impressed date mark for 1878, puce and gilt crowned globe mark and retailer's ribbon for John Mortlock, Oxford St. and Orchard St., London, the small objects with gilt marks above 1884. Each in the Sevres style, the center painted with a cluster of fruit within a scrolling green ribbon surround, including: two ink-pots and covers with gilt lined wells, a small vase 'oreilles' and a two-handled tray 'plateau Duplessis'. *Width of tray 12 3/4 inches (32.4 cm).*

Provenance:

Masterpieces of Minton, Selected Items from the Minton Museum Collection, Bonhams, London, 23 July 2002, lot 95.

**\$800-1,200**

# DOYLE

Property of a Fifth Avenue Philanthropist Nov 7, 2024 - Nov 8, 2024



307

**Five Continental Porcelain Models of Birds**

**19th century, blue crossed arrows, crossed lines and check marks to some**

Estate / Collection: Property of a Fifth Avenue Philanthropist

All modeled perched on a high tree-stump base. *Height of tallest 7 1/4 inches (18.4 cm).*

**\$200-300**



308

**Pair of Samson Porcelain Gilt Metal-Mounted Models of Parrots**

**Late 19th century, blue crossed lines marks**

Estate / Collection: Property of a Fifth Avenue Philanthropist

In the Meissen style, each naturalistically modeled with outstretched wing perched atop a tree-stump applied with flower, on a rocaille-scroll foot. *Height 11 1/8 inches (27.3 cm).*

For a similar pair, see Chiswick Auctions, London, 12 December 2019, lot 189

**\$800-1,200**



309

**Two Chinese White Jade Plaques**

**Qing Dynasty**

Estate / Collection: Property of a Fifth Avenue Philanthropist

Each with fitted hardwood boxes. *Width of largest 5 inches (12.5 cm).*

**\$700-900**



310

**Louis XV Style Upholstered Giltwood Three Panel Screen**

Estate / Collection: Property of a Fifth Avenue Philanthropist

The arched crest centering a shell and scrolls, raised on cabriole legs. *Height 56 1/2 inches (143 cm), width of central panel 20 inches (51 cm), width of side panels 13 3/4 inches (35 cm).*

**\$400-600**

# DOYLE

Property of a Fifth Avenue Philanthropist Nov 7, 2024 - Nov 8, 2024

311

## Pair of Louis XVI Style Giltwood and Mirrored Corner Shelves

Estate / Collection: Property of a Fifth Avenue Philanthropist

Each baluster-form with foliate scroll border. *Height 36 inches (91.5 cm), width 14 inches (35.5 cm), depth 8 inches (20 cm).*

\$600-900



312

## Louis XVI Style Gilt Bronze Six Light Chandelier

Estate / Collection: Property of a Fifth Avenue Philanthropist

The draped domed stem with a flame finial issuing rope twist scroll branches, hung with chains from a foliate crown. *Height 25 inches (63.5 cm), diameter 23 inches (58.5 cm).*

\$800-1,200



313

## Pair of Sevres Style Porcelain and Staffordshire Enamel Gilt-Bronze Mounted Blue Vases and Covers

Late 18th/early 19th century

Estate / Collection: Property of a Fifth Avenue Philanthropist

Each of inverted pear shape, the front painted with an amorous couple in garden landscape within a gilt foliate cartouche, the shoulder flanked by goat mask handles, the obverse painted with a central bouquet, the pale-blue reserve enameled in the manner of Bilston/Battersea with white stars and trellis, the enamel cover and socle decorated to match, cast wreath and canted square base. *Height 7 1/2 inches (19.3 cm).*

\$600-900



314

## Pair of Sevres Style Porcelain Gilt-Bronze Mounted Two-Handled Turquoise-Ground Vases

Late 19th/20th century

Estate / Collection: Property of a Fifth Avenue Philanthropist

Of tapering cylindrical form, each vase painted with a central bird in a landscape within a gilt cartouche, the obverse with a musical trophy, flanked by upright pilaster handles, on a socle foot. *Height 6 inches (15.2 cm).*

\$500-700



# DOYLE

Property of a Fifth Avenue Philanthropist Nov 7, 2024 - Nov 8, 2024

315



## Pair of Sevres Style Porcelain Gilt-Bronze Mounted Turquoise Vases as Lamps and Similar Inkwell

Mid-19th century

Estate / Collection: Property of a Fifth Avenue Philanthropist

Each vase of krater form flanked by beaded bracket handles, the center painted with paired birds within a gilt cartouche, the obverse with tight bouquets, on a spiral fluted socle and rocaille-scroll base, the lip with gadroons and acanthus leaf tips, offered with later pink and green fringed shades, *height of vase 9 inches (22.8 cm)*; the turquoise ground domed inkwell with four radiating pilasters, inset with a central inkwell flanked by two pen holders, raised on four circular feet, *diameter 5 1/2 inches (14 cm)*.

\$700-900

316



## Pair of Louis XVI Painted and Parcel Giltwood Settees

Estate / Collection: Property of a Fifth Avenue Philanthropist

Each with a leaf tip and guilloche carved frame, the straight back with finials, all raised on turned stop fluted legs. *Height of back 38 1/2 inches (98 cm), height of seat 18 1/2 inches (47 cm), length 49 inches (124.5 cm), depth 23 inches (58.5 cm)*.

\$4,000-6,000

317



## Brocade and Nailhead Three-Fold Screen

Estate / Collection: Property of a Fifth Avenue Philanthropist

*Height of each panel 44 inches (112 cm), width 20 1/2 inches (52 cm)*.

\$500-700

318



## Louis XVI Style Caned and Upholstered Painted Wood Miniature Fauteuil

Estate / Collection: Property of a Fifth Avenue Philanthropist

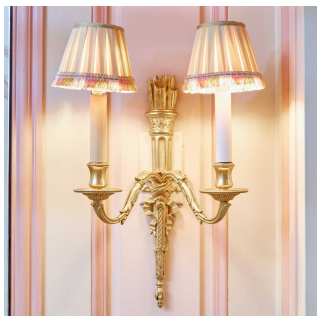
The oval back with floral crest, above padded arms, raised on turned fluted legs. *Height of back 19 inches (48.5 cm), width 13 1/2 inches (34.5 cm), depth 11 1/2 inches (29 cm)*.

\$150-250



# DOYLE

Property of a Fifth Avenue Philanthropist Nov 7, 2024 - Nov 8, 2024



319

## Two Pairs of Louis XVI Style Gilt Metal Two-Light Sconces and a Pair of Giltwood Brackets

20th Century

Estate / Collection: Property of a Fifth Avenue Philanthropist

Comprising a pair of sconces with tied quiver backs, *height 12 1/2 inches (32 cm)*, *width 9 1/2 inches (24 cm)*; pair of sconces with draped urn finials, *height 14 inches (35.5 cm)*, *width 9 inches (23 cm)*; and a pair of brackets with reeded stems hung with swags, *height 12 inches (30.5 cm)*, *width 4 3/4 inches (12 cm)*.

\$400-600



320

## Louis XVI Style Parquetry Occasional Table with Fire Screen

Estate / Collection: Property of a Fifth Avenue Philanthropist

The bowed rectangular top above a frieze drawer and with an adjustable fire screen, raised on tapering square legs with a conforming shelf stretcher. *Height 28 1/4 inches (72 cm)*, *width 16 3/4 inches (42.5 cm)*, *depth 11 1/4 inches (28.5 cm)*.

\$800-1,200



321

## Louis XVI Parquetry Writing Table

Estate / Collection: Property of a Fifth Avenue Philanthropist

The rectangular top with adjustable writing surface, above a frieze drawer over a pair of doors with book spine fronts, raised on tapering square legs. *Height 28 3/4 inches (73 cm)*, *width 17 1/4 inches (44 cm)*, *depth 11 3/4 inches (30 cm)*.

\$2,000-3,000



322

## Two Sevres Style Porcelain Turquoise-Ground Saucers Mounted as Gilt-Bronze Chambersticks

Estate / Collection: Property of a Fifth Avenue Philanthropist

he mounts 19th century, the trellis example with interlaced Ls and painters T; the other with 19th century decoration. Each central columnar candle holder depicted as the Three Graces, the nozzle and foot chased with scrollwork, the first with turquoise trellis ground enclosing flowerheads; the second painted with figures in gilt cartouches reserved on a deep-turquoise ground, both with a coiled serpent handle and variant snuffers. *Height of larger 4 inches (10.1 cm)*, *width 7 inches (17.8 cm)*.

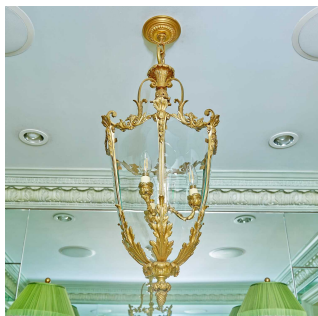
Provenance:

With Howell James & Co., Regent Street, London (label) to the first.

\$300-500

# DOYLE

Property of a Fifth Avenue Philanthropist Nov 7, 2024 - Nov 8, 2024

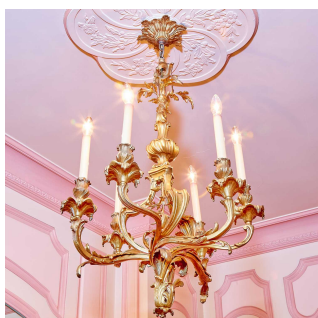


323

**Louis XVI Style Gilt Metal Lantern**  
**20th Century**

Estate / Collection: Property of a Fifth Avenue Philanthropist  
The panels with foliate frames and scrolling supports. *Height 28 inches (71 cm), diameter 12 inches (31 cm).*

**\$400-600**

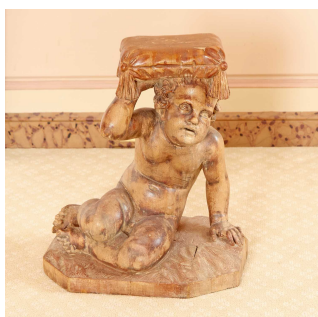


324

**Louis XV Style Gilt Bronze Five-Light Chandelier**

Estate / Collection: Property of a Fifth Avenue Philanthropist  
With a spiral fluted baluster-form stem issuing foliate scroll branches. *Height 31 inches (79 cm), diameter 20 inches (51 cm).*

**\$2,000-4,000**



325

**Carved Wood Figural Stool**

Estate / Collection: Property of a Fifth Avenue Philanthropist  
With a seated putti holding aloft a cushion. *Height 20 1/2 inches (52 cm), length 17 1/2 inches (44.5 cm), depth 12 inches (30 cm).*

**\$200-300**



326

**Upholstered Settee**  
**20th Century**

Estate / Collection: Property of a Fifth Avenue Philanthropist  
With a shawl back and shaped arms, above a serpentine seat with pleated skirt. *Height of back 35 inches (89 cm), height of seat 16 inches (40 cm), width 63 inches (160 cm), depth 29 inches (74 cm).*

**\$400-600**

# DOYLE

Property of a Fifth Avenue Philanthropist Nov 7, 2024 - Nov 8, 2024



327

## Louis XVI Style Gilt Bronze Mounted Mahogany Vide Poche

Estate / Collection: Property of a Fifth Avenue Philanthropist

The rectangular well with applied repeating leaf tip border, raised on openwork trestle base with applied beading, the shelf stretcher with a circular gallery. *Height 27 1/2 inches (70 cm), width 19 1/4 inches (49 cm), depth 10 inches (25.5 cm).*

\$400-600



328

## Three Brass Swing Arm Floor Lamps Modern

Estate / Collection: Property of a Fifth Avenue Philanthropist

Comprising a pair with tent shades, and one with a silk shade.

\$500-700



329

## Italian Neoclassical Painted and Parcel Gilt Console Table Early 19th century

Estate / Collection: Property of a Fifth Avenue Philanthropist

The rectangular marble top above a vine carved frieze, raised on turned fluted legs. *Height 32 3/4 inches (83 cm), width 46 1/2 inches (118 cm), depth 22 1/2 inches (57 cm).*

\$1,500-2,500



330

## Chinese Rose Mandarin Porcelain Stool 20th Century

Estate / Collection: Property of a Fifth Avenue Philanthropist

Of concave square form; meticulously decorated with figural scenes and key fret bands among blossoms. *Height 18 inches (46 cm).*

(Dimensions: Height 18 inches)

\$300-500

# DOYLE

Property of a Fifth Avenue Philanthropist Nov 7, 2024 - Nov 8, 2024



331

**Porcelain Flower-Encrusted Scent-Bottle and Stopper**  
**Circa 1840, blue G x mark, possibly Russian**

Estate / Collection: Property of a Fifth Avenue Philanthropist  
Of cushion form with large rocaille button form stopper, the shoulder painted with fruit and flowers above applied flowers and foliage, the mouth enriched with gilt scrollwork, on a quatrefoil foot. *Height 5 1/4 inches (13.3 cm).*

**\$300-500**



332

**Pair of Louis XVI Style Gilt Bronze and Pink Marble Candelabra**

Estate / Collection: Property of a Fifth Avenue Philanthropist  
Each fluted stem issuing two scrolling leaf-capped branch, raised on a square part fluted base. *Height 7 3/4 inches (20 cm), width 6 1/4 inches (16 cm).*

**\$300-500**



333

**Two Louis XV Style Upholstered Walnut Stained Footstools**  
**20th Century**

Estate / Collection: Property of a Fifth Avenue Philanthropist  
With differing upholstery, each rectangular with shaped frieze, raised on cabriole legs. *Height 7 1/4 inches (18.5 cm), width 13 1/2 inches (34.5 cm), depth 11 inches (28 cm).*

**\$300-500**



334

**Pair of Sevres Style Porcelain Gilt-Bronze Mounted Turquoise-Ground Krater Vases and Covers**  
**19th century**

Estate / Collection: Property of a Fifth Avenue Philanthropist  
Each painted with an equestrian landscape views within a chased gilt surround, the obverse with rustic farm views; the sides with scrolling flowering vine and scattered butterflies, flanked by beaded bracket handles, on a fluted socle, the square plinth raised of four paw feet. *Height 11 inches (27.9 cm).*

**\$400-600**

# DOYLE

Property of a Fifth Avenue Philanthropist Nov 7, 2024 - Nov 8, 2024



335

**Louis XVI Style Gilt Bronze Mounted Parquetry Table à Écrire  
19th Century**

Estate / Collection: Property of a Fifth Avenue Philanthropist

The rectangular top with an applied leaf tip border, above a frieze drawer with foliate scrolls and interlaced flowers, raised on tapering square legs. *Height 29 1/2 inches (75 cm), width 34 1/2 inches (87.5 cm), depth 18 3/4 inches (47.5 cm).*

**\$500-700**



336

**Empire Style Gilt Bronze Candlestick Lamp with Female Busts**

Estate / Collection: Property of a Fifth Avenue Philanthropist

The fluted columnar stem with female masks and pairs of feet, on a circular base. *Height 13 inches (33 cm), diameter of base 5 1/2 inches (14 cm).*

**\$400-600**



337

**Pair of English Porcelain Flower-Encrusted Vine-Handled Vases and Covers  
Circa 1830, attributed to Rockingham**

Estate / Collection: Property of a Fifth Avenue Philanthropist

Each of inverted pear form, finely painted with small figures in a landscape vignette within a garland of applied flowers, flanked by vine handles, the obverse with floral bouquets, on a rocaille scroll-molded foot, the cover similar painted, with later replacement flowerhead finial, once mounted as a lamp. *Height 9 1/8 inches (23.2 cm).*

**\$400-600**



338

**Pair of Chinese Export Porcelain Vases  
19th Century**

Estate / Collection: Property of a Fifth Avenue Philanthropist

Mounted as lamps. *Height of vase 11 1/4 inches (28.5 cm), height with mounts 13 3/4 inches (35 cm), width of base 7 1/2 inches (19 cm).*

**\$1,000-1,500**



# DOYLE

Property of a Fifth Avenue Philanthropist Nov 7, 2024 - Nov 8, 2024



339

**Louis XVI Gilt Bronze Mounted Tulipwood Parquetry Secretaire a Abattant**  
**Leonard Boudin, Paris, last quarter 18th century**

Estate / Collection: Property of a Fifth Avenue Philanthropist

The shaped rectangular marble top above a frieze drawer with foliate scrolls, over a pair of tambour doors opening to a fitted interior, over a drawer with fold over leather inset writing surface, over a pair of tambour doors opening to a fitted interior, all raised on bracket feet, stamped *Boudin*. Height 51 1/2 inches (130 cm), width 33 3/4 inches (86 cm), depth 14 1/4 inches (36 cm).

Provenance: Jacques Perrin, Paris, 1990s

**\$20,000-30,000**



340

**Five Enamel Pin Cases**  
**18th/19th Century**

Estate / Collection: Property of a Fifth Avenue Philanthropist

Each cylindrical. Height of largest 5 1/4 inches (13.5 cm).

**\$500-700**



341

**Three Continental Enamel Erotic Snuff Boxes**  
**Late 18th century**

Estate / Collection: Property of a Fifth Avenue Philanthropist

Comprising an oval example, the interior cover with a woman and cupid, length 4 inches (10 cm); rectangular example decorated with vignettes, the interior cover with a nursing woman, length 3 1/4 inches (8.5 cm); and an oval example decorated with floral sprays, the interior cover with a beauty, length 2 1/2 inches (6.5 cm).

**\$600-800**



342

**Group of Seven Continental Enamel Patch Boxes and Scent Flasks**  
**Late 18th/early 19th century**

Estate / Collection: Property of a Fifth Avenue Philanthropist

Various forms, including some with verses. Length of largest 1 7/8 inches (5 cm).

**\$300-500**

# DOYLE

Property of a Fifth Avenue Philanthropist Nov 7, 2024 - Nov 8, 2024



343

## Five Enamel and Porcelain Snuff Boxes 18th/19th Century

Estate / Collection: Property of a Fifth Avenue Philanthropist  
Including a double example with portraits, *length 4 inches (10 cm)*, an oval example with frolicking putti, *length 3 1/2 inches (9 cm)*; a rectangular example with an amorous couple, *length 3 1/4 inches (8.2 cm)*, etc.

\$700-1,000



344

## French Portrait Aide Memoire and Two Pairs of Enamel Opera Glasses 19th Century

Estate / Collection: Property of a Fifth Avenue Philanthropist  
The aide memoire with a portrait to each side, *height 3 1/2 inches (9 cm)*; French opera glasses with pink guilloche enamel marked Carpentier, Paris, *length 4 inches (10 cm)*; and opera glasses decorated with landscapes marked Canfield Brother & Co., Baltimore, *length 4 inches (10 cm)*.

\$400-600



345

## Four Continental Enamel Snuff Boxes Late 18th/ early 19th century

Estate / Collection: Property of a Fifth Avenue Philanthropist  
Comprising three rectangular examples and one in the form of an armoire. *Length of largest 2 3/4 inches (7 cm)*.

\$500-700



346

## Continental Gold and Enamel Portrait Snuff Box

Estate / Collection: Property of a Fifth Avenue Philanthropist  
Oval with vertical bands, the hinged cover with a portrait of a woman. *Length 3 1/2 inches (9 cm)*.

\$800-1,200

# DOYLE

Property of a Fifth Avenue Philanthropist Nov 7, 2024 - Nov 8, 2024



347

**Four Continental Enamel Desk Objects**  
**Late 18th/ early 19th century**

Estate / Collection: Property of a Fifth Avenue Philanthropist  
Comprising a heart-form dish, double inkwell, *length 5 1/4 inches (13.3 cm)*, fluted bowl, and a small open salt.

**\$300-500**



348

**Louis XVI Style Gilt Bronze Two-Light Bouillotte Lamp**

Estate / Collection: Property of a Fifth Avenue Philanthropist  
With two scrolling branches, the dished base with openwork gallery. *Height overall 21 3/4 inches, width 8 1/4 inches (21 cm).*

**\$200-400**



349

**Pair of Carved Rhodonite Figures of Ducks**  
**20th Century**

Estate / Collection: Property of a Fifth Avenue Philanthropist  
Each realistically modeled on a wooden base. *Height overall 4 3/4 inches (12 cm), height of bird alone 3 3/4 inches (9.5 cm), length 4 3/4 inches (12 cm).*

**\$300-500**



350

**Small Thai Gilt Bronze Figure of Buddha**  
**19th Century**

Estate / Collection: Property of a Fifth Avenue Philanthropist  
Of typical standing form on tiered base. *Height 11 1/2 inches (29 cm).*

**\$200-300**

# DOYLE

Property of a Fifth Avenue Philanthropist Nov 7, 2024 - Nov 8, 2024



351

**Group of Chinese Famille Jaune Porcelain Articles**  
**20th Century**

Estate / Collection: Property of a Fifth Avenue Philanthropist  
Comprising fifteen porcelain figures and vessels of varying forms. *Height of largest 6 inches (15.3 cm).*

**\$300-500**



352

**Large Group of Chinese Turquoise and Faux Turquoise Miniature Articles**

Estate / Collection: Property of a Fifth Avenue Philanthropist  
Fifty-eight pieces in total.

**\$300-500**

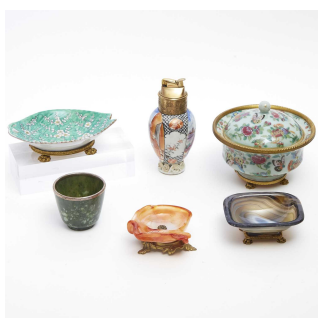


353

**Group of of Asian Decorative Table Articles**  
**20th Century and Earlier**

Estate / Collection: Property of a Fifth Avenue Philanthropist  
Comprising seven small porcelain articles, various hardstone bronze and glass items, with two lacquer boxes. *Length of largest 6 inches (15 cm).*

**\$400-600**



354

**Group of Desk Articles Incorporating Chinese Materials**  
**Nicholas Haydon and Others**

Estate / Collection: Property of a Fifth Avenue Philanthropist  
Comprising a hardstone and a porcelain dish on gilt metal bases with an export porcelain bowl and cover, all marked Nicholas Haydon; with unmarked silver-mounted jade cup and a lighter incorporating Chinese export porcelain. *Width of largest 6 1/2 inches (16.5 cm).*

**\$800-1,200**

# DOYLE

Property of a Fifth Avenue Philanthropist Nov 7, 2024 - Nov 8, 2024



355

## Group of Etched Ruby Glass Dresser Bottles

Estate / Collection: Property of a Fifth Avenue Philanthropist

Most with foliate branches against a ground of fern leaves, including bottles in various sizes, a jar with a sterling silver cover, and a bud vase with French sterling silver base. *Height of largest 8 3/4 inches (22.5 cm), height of bud vase 4 1/4 inches (11 cm).* Approximately fourteen pieces.

\$1,000-1,500



356

## Louis XV Upholstered Painted Wood Chaise Longue

Estate / Collection: Property of a Fifth Avenue Philanthropist

The shaped arch crest with carved flowers above padded arms, the seat rail carved with flowers, raised on cabriole legs. *Height of back 41 1/4 inches (105 cm), height of seat 21 1/2 inches (54.5 cm), length 67 inches (170 cm), width 32 inches (81 cm).*

\$2,000-3,000



357

## Louis XVI Style Gilt Bronze Mounted Mahogany Side Table Guillaume Grohe, Paris, second half 19th century

Estate / Collection: Property of a Fifth Avenue Philanthropist

The rectangular top inlaid with diamond pattern, above a frieze drawer applied with tied floral swags, on turned fluted legs with a shelf stretcher, raised on toupee feet, stamped *Grohe a Paris*. *Height 29 inches (74 cm), width 24 1/4 inches (62 cm), depth 18 inches (46 cm).*

\$400-600



358

## Bloor Derby Porcelain Model of a Poodle and Seven Staffordshire Models of King Charles Spaniels

The first circa 1820, iron-red crowned D mark

Estate / Collection: Property of a Fifth Avenue Philanthropist

Modeled recumbent on a gilt enriched roccaille-molded base, *height 4 1/2 inches (11.4 cm)*; the seven Staffordshire flatback examples in two-sizes, four left hand example and three right (forming three pairs and a single), *height of the larger 3 7/8 inches (9.8 cm)* and *height of the smaller 3 inches (7.6 cm).*

\$200-300



# DOYLE

Property of a Fifth Avenue Philanthropist Nov 7, 2024 - Nov 8, 2024

359



**Pair of Minton Porcelain Pink-Ground Two-Handled 'Sneyd' Vases and Covers as Table Lamps**  
Circa 1850

Estate / Collection: Property of a Fifth Avenue Philanthropist

After the Sevres vase '*pot pourri feuilles de mirte*', of inverted pear shape, the shoulders flanked by entwined double-loop handles with leafy myrtle terminals, the center painted with paired birds in blossoming branches, within gilt enriched green scrollwork and an undulating ribbon, the obverse with tight bouquets of garden flowers, on a spiral fluted socle foot, offered with later pink and green tasseled and fringed shades, the cover finials now detached and used as lamp finials. *Height of the porcelain 11 inches (27.9 cm).*

Reference Geoffrey A. Godden, 'Encyclopedia of British Porcelain Manufacturers', (1988), fig. 281. Here noting that this model was displayed by Minton at the 1849 Birmingham Exhibition.

**\$600-900**

360



**Louis XV Style Gilt Bronze Twelve-Light Chandelier**

Estate / Collection: Property of a Fifth Avenue Philanthropist

The foliate scroll open stem centering an urn of flowers and issuing foliate scroll branches hung at various heights. *Height 40 inches (101.5 cm), diameter 24 inches (61 cm).*

**\$2,000-4,000**

361



**Louis XV Upholstered Giltwood Bench**

Estate / Collection: Property of a Fifth Avenue Philanthropist

The shaped rectangular seat above a frieze of branches centering openwork shells, raised on cabriole legs with masks at knees, with shaped flat double X-form stretcher. *Height 17 3/4 inches (45 cm), length 43 inches (119.5 cm), depth 15 3/4 inches (40 cm).*

**\$1,200-2,000**

# DOYLE

Property of a Fifth Avenue Philanthropist Nov 7, 2024 - Nov 8, 2024

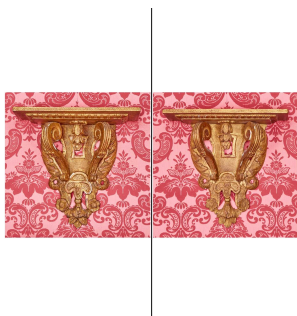


362

**Pair of Louis XVI Gilt Bronze Three-Light Candelabra Mounted as Lamps**  
**18th Century**

Estate / Collection: Property of a Fifth Avenue Philanthropist  
Each fluted knopped columnar stem issuing two scrolling branches, on a domed circular base. *Height 16 1/2 inches (42 cm), width 12 inches (31 cm).*  
Provenance: Patrick Perrin, Paris, 2000s

**\$5,000-7,000**



363

**Pair of Regence Giltwood Wall Brackets**  
**Part 18th century**

Estate / Collection: Property of a Fifth Avenue Philanthropist  
The rectangular top raised on a shaped back with rocaille and flowers, with two scrolling supports centering a floral pendant. *Height 14 inches (36 cm), width 15 1/2 inches (39.5 cm), depth 7 1/2 inches (19 cm).*

**\$800-1,200**



364

**Fully Upholstered X-Form Stool**  
**20th Century**

Estate / Collection: Property of a Fifth Avenue Philanthropist  
The rectangular cushion top with tassel fringe, raised on an X-form base. *Height 16 inches (41 cm), width 22 1/2 inches (57 cm), depth 16 inches (40.5 cm).*

**\$200-300**



365

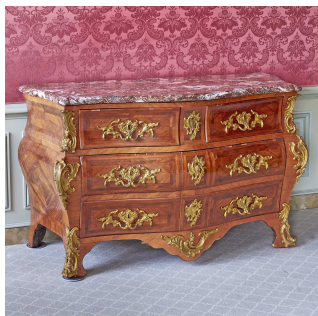
**Louis XVI Style Upholstered and Caned Revolving Fauteuil de Bureau**

Estate / Collection: Property of a Fifth Avenue Philanthropist  
The frame carved with repeating acanthus leaves and guilloche, with scrolling hand holds, raised on turned stop fluted legs. *Height of back 35 1/4 inches (89.5 cm), height of seat 20 inches (51 cm), width 21 3/4 inches (55 cm), depth 25 inches (63.5 cm).*

**\$500-700**

# DOYLE

Property of a Fifth Avenue Philanthropist Nov 7, 2024 - Nov 8, 2024



366

**Louis XV Gilt Bronze Mounted Marble Top Walnut Bombé Commode**  
**Roger Vandercruse LaCroix, Paris, mid 18th century**

Estate / Collection: Property of a Fifth Avenue Philanthropist

The shaped rectangular marble top above two short over two long drawers, the corners with scroll and rocaille appliques, raised on bracket feet. *Height 34 1/2 inches (87.5 cm), width 57 inches (145 cm), depth 26 inches (66 cm).*

**\$5,000-7,000**



367

**Patinated Bronze Figure of a Female Triton**  
**Charles Sykes**

Estate / Collection: Property of a Fifth Avenue Philanthropist

Raised on a marble base. Signed C. Sykes. *Height overall 11 inches (28 cm), height of figure 9 inches (23 cm), diameter of base 9 inches (23 cm).*

**\$300-500**



368

**Louis XVI Style Gilt Bronze and Marble Figural Candlestick Lamp**

Estate / Collection: Property of a Fifth Avenue Philanthropist

With a maiden holding a basket of flowers over her head, on a beaded circular base raised on button feet. *Height 13 1/4 inches (34 cm), diameter of base 5 inches (12.7 cm).*

**\$400-600**



369

**Continental Marble Bust of Caesar**

Estate / Collection: Property of a Fifth Avenue Philanthropist

Realistically modelled with a laurel wreath and tied toga. *Height 23 inches (58.5 cm), width 20 inches (51 cm).*

**\$1,500-3,000**

# DOYLE

Property of a Fifth Avenue Philanthropist Nov 7, 2024 - Nov 8, 2024



370

**Louis XVI Brass Inset Tulipwood Bibliothèque**  
**18th Century**

Estate / Collection: Property of a Fifth Avenue Philanthropist  
Rectangular with pair of grille doors above a pair of panel doors, flanked by reeded stiles, raised on bracket feet. *Height 6 feet 6 inches (198.2 cm), width 60 inches (152 cm), depth 12 1/4 inches (31 cm).*

**\$800-1,200**



371

**Louis XVI Floral Chintz Upholstered Giltwood Settee**

Estate / Collection: Property of a Fifth Avenue Philanthropist  
The framed carved with guilloche and foliage, the rectangular back above padded arms, raised on tapering fluted legs, stamped. *Height of back 35 inches (89 cm), height of seat 18 inches (46 cm), width 41 inches (104 cm), depth 24 inches (61 cm).*

**\$800-1,200**

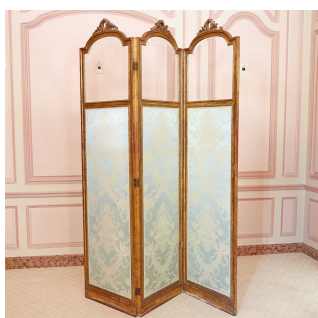


372

**Pair of Louis XVI Floral Chintz Upholstered Painted and Parcel Giltwood Side Chairs**

Estate / Collection: Property of a Fifth Avenue Philanthropist  
Each with an oval back and circular seat with repeating leaf tip border, raised on turned stop fluted legs. *Height of back 35 inches (89 cm), height of seat 18 1/2 inches (47 cm), width 19 inches (48.3 cm), depth 18 1/2 inches (47 cm); Together with Similar Louis XVI Upholstered Painted and Parcel Giltwood Side Chair.*

**\$2,000-3,000**



373

**Louis XVI Style Glass, Silk Damask and Giltwood Three-Fold Screen**

Estate / Collection: Property of a Fifth Avenue Philanthropist  
Each arched crest with a laurel wreath and foliage, above a glazed panel over fabric panel, each with a beaded border. *Height of each panel 6 feet 6 inches (198 cm), width 20 1/2 inches (52 cm).*

**\$600-900**



# DOYLE

Property of a Fifth Avenue Philanthropist Nov 7, 2024 - Nov 8, 2024



374

**Set of Four Louis XV Style Gilt Bronze Two-Light Sconces**

Estate / Collection: Property of a Fifth Avenue Philanthropist

Each with a foliate scroll back issuing staggered foliate scroll branches. *Height 17 inches (43 cm), width 10 1/2 inches (26.5 cm).*

**\$2,000-3,000**



375

**Louis XVI Style Gilt Bronze Mahogany and Marble Center Table  
Manner of Weisweiler, 20th century**

Estate / Collection: Property of a Fifth Avenue Philanthropist

The circular marble top raised on pairs of ringed columns, with a shaped openwork X-form stretcher, raised on tapering cylindrical feet. *Height 29 inches (74 cm), diameter 39 inches (99 cm).*

**\$2,000-3,000**



376

**Louis XVI Upholstered Painted and Giltwood Day Bed  
Last quarter 18th century**

Estate / Collection: Property of a Fifth Avenue Philanthropist

The box back and frame with carved guilloche centering a floral draped covered urn, the posts with pomegranite finials, raised on cabriole legs. *Height of back 39 inches (99 cm), height of seat 19 inches (49 cm), length 62 1/2 inches (159 cm), depth 30 3/4 inches (78 cm).*

**\$6,000-9,000**



377

**Regence Giltwood Border Glass Mirror**

Estate / Collection: Property of a Fifth Avenue Philanthropist

The arched crest with floral swags centering a medallion, above foliate scrolls with birds, over a rectangular mirror plate with shaped scrolling border. *Height 69 3/4 inches (177 cm), width 41 1/2 inches (105.5 cm).*

Provenance: Lee Calicchio, Ltd., December 2003

**\$3,000-5,000**



# DOYLE

Property of a Fifth Avenue Philanthropist Nov 7, 2024 - Nov 8, 2024



378

**Louis XVI Style Galleried Marble Top Mahogany Gueridon**  
**Escalier de Cristal, Paris, 20th Century**

Estate / Collection: Property of a Fifth Avenue Philanthropist

The circular galleried marble top above a slide, raised on tapering fluted legs, with two circular shelf stretchers on a circular base. *Height 30 1/2 inches (77.5 cm), diameter of top 15 1/4 inches (39 cm).*

**\$700-1,000**



379

**Tufted Floral Upholstered Settee**  
**Late 20th century**

Estate / Collection: Property of a Fifth Avenue Philanthropist

With a button tufted low back and seat, with a pleated tassled fringe. *Height of arms 29 inches (74 cm), width 60 inches (153 cm), depth 30 inches (76 cm).*

**\$400-600**



380

**Tufted Floral Upholstered Settee and Ottoman**  
**Late 20th century**

Estate / Collection: Property of a Fifth Avenue Philanthropist

With button tufted back and seat, with tassled fringe skirt. *Height of back of settee 29 1/2 inches (75 cm), height of seat 15 inches (38 cm), width 71 inches (180 cm), depth 36 inches (91.5 cm), height of ottoman 13 1/2 inches (34 cm), width 36.5 inches (93 cm), depth 24 inches (61 cm).*

**\$500-700**



381

**Tufted Chintz Upholstered Round Ottoman**  
**20th Century**

Estate / Collection: Property of a Fifth Avenue Philanthropist

With button tufted seat and pleated tassled fringe. *Height 17 1/4 inches (44 cm), diameter 32 inches (81 cm).*

**\$300-500**

# DOYLE

Property of a Fifth Avenue Philanthropist Nov 7, 2024 - Nov 8, 2024



382

**Pair of Louis XV Style Button-Back Floral Upholstered Side Chairs  
20th Century**

Estate / Collection: Property of a Fifth Avenue Philanthropist

Each with an hourglass shaped back above a circular seat with pleated skirt. *Height of back 33 1/2 inches (85 cm), height of seat 17 inches (43 cm), width 20 inches (51 cm), depth 24 inches (61 cm); Together with and Louis XV Style Ottoman Upholstered en Suite, height 14 1/2 inches (37 cm), width 24 inches (61 cm), depth 21 inches (53.5 cm).*

**\$400-600**



383

**Limoges Style Ceramic Turquoise-Ground Two-Handled Foot Bath  
20th century, gilt Imperial crowned crossed swords mark**

Estate / Collection: Property of a Fifth Avenue Philanthropist

Oval flanked by loop handles, decorated with spaced floral medallions within gilt surrounds. *Width 22 inches (55.9 cm).*

**\$100-200**



384

**Pair of Vista Alegre Porcelain Puce-Decorated Two-Handled Cache Pots (Seaux à Verre)**

**Together with a Pair of Sevres Style Two-Handled Cache Pots (Seaux à Bouteille)**

Estate / Collection: Property of a Fifth Avenue Philanthropist

Both pairs 20th century. Vista Alegre examples with printed black VA marks; each painted front and back with views of a Medieval castle on a hill, gilt banded rim.

Sevres style each decorated with flowers within a gilt vine surround, the scale pattern grounds centering single blossoms.

**\$100-200**



385

**Louis XVI Style Gilt Bronze, Marble and Mahogany Center Table  
Manner of Weisweiler, 20th century**

Estate / Collection: Property of a Fifth Avenue Philanthropist

The circular marble top raised on pairs of ringed columnar supports, with a shaped stretcher and splay feet. *Height 28 inches (71 cm), diameter 31 1/4 inches (79.5 cm).*

**\$1,500-2,000**

# DOYLE

Property of a Fifth Avenue Philanthropist Nov 7, 2024 - Nov 8, 2024



386

## Louis XV Style Floral Chintz Upholstered Painted Wood Small Bergere

Estate / Collection: Property of a Fifth Avenue Philanthropist

With an arched crest and padded arms, with reeded frame, raised on cabriole legs. *Height of back 33 3/4 inches (86 cm), height of seat 16 inches (41 cm), width 23 inches (58.5 cm), depth 24 inches (61 cm).*

**\$300-400**



387

## Louis XVI Style Upholstered Grey Painted Wood Prie-Dieu 20th Century

Estate / Collection: Property of a Fifth Avenue Philanthropist

The padded rest on stop fluted supports above a baluster rail, over a cushion with nailhead trim, with tapering turned stop fluted legs. *Height 34 1/2 inches (87.5 cm), width 14 1/4 inches (36 cm), depth 13 1/2 inches (34 cm).*

**\$300-500**



388

## Louis XV Style Floral Chintz Upholstered Carved Wood Slipper Chair 20th Century

Estate / Collection: Property of a Fifth Avenue Philanthropist

The shaped crest with scroll and shell, above a button tufted back, raised on cabriole legs, *height of back 29 1/2 inches (75 cm), height of seat 13 1/2 inches (34 cm), width 20 inches (51 cm), depth 20 1/2 inches (52 cm); Together with a Slipper Chair Upholstered Ensuite, height of back 28 inches (71 cm), height of seat 18 inches (45.7 cm), width 21 inches (53.5 cm), depth 16 inches (40.7 cm).*

**\$200-300**



389

## Two Gilt-Bronze Column-Form Lamps

Estate / Collection: Property of a Fifth Avenue Philanthropist

Comprising a Louis XVI style example with acanthus clad part-reeded stem, the square base with canted corners and hung with swags, *height 4 3/4 inches*; and an Empire style example with a fluted stem on a circular base with foliate scroll band, *height 10 1/4 inches (27 cm).*

**\$300-500**